

[查询8025供应商](#)

Savin Security And Productivity Solutions

Unauthorized Copy Control Features



Using the RPCS driver, you can print an embedded message and masking pattern on your documents. If the document is copied or stored in the Document Server on a Savin 8025/8030 with the Copy Data Security Unit installed, the output of the copy will gray out.

The Secure Solution For Your Digital Documents And Your Network

With identity and document theft becoming an increasing problem, the Savin 8025/8030 Series was designed with a host of sophisticated security features to safeguard information at every point in the printing, transmission and distribution process.

- **Windows/LDAP Authentication** guards access to your network PC by requiring users to input their existing names and passwords.

- **Restrict unauthorized access** by limiting rights to the users by application.
- **Encryption** protects data from interception, falsification and tampering during transmission.
- **Stored Print/Hold Print** delays output runs until the user releases them during walkup. This prevents unauthorized persons from seeing sensitive documents lying in output trays.
- **DataOverwriteSecurity System (DOSS)** automatically overwrites the "latent image" left in the internal hard drive after a job is completed, making any effort to access and reconstruct residual image data virtually impossible.

Choose Savin

Savin offers a comprehensive range of printing and document solutions and has formed partnerships with numerous solution providers. After evaluating your specific applications and needs, we will provide the right solution to boost your productivity, reduce your costs and improve your competitive edge.

For more information, contact your authorized Savin dealer.

www.savin.com

Savin 8025/8030 Specifications

ENGINE/COPIER SPECIFICATIONS

Configuration	Console
Scanning Element	Flatbed with Moving CCD Array Image Sensor
Printing Process	Single Laser Beam Scanning & Electrophotographic printing
Document Feeding	Optional 50-sheet ARDF
Toner	Dry, Dual Component
System Memory (std./max.)	128/384 MB RAM
Hard Disk Drive	20 GB option
Copy Resolution	600 x 600 dpi
Grayscale	256 levels
Exposure Adjustment	Manual & Automatic
Quantity Indicator	Up to 999
Original Type	Book/Sheet
Maximum Original Size	Up to 11" x 17"
Copy Size	5.5" x 8.5" to 11" x 17"
Copy Type	Plain Paper, Transparencies, Envelopes
Warm-up Time	12 seconds
First Copy Speed	4.4 seconds
Continuous Copying Speed	8025: 25 copies/minute (LTR) 8030: 30 copies/minute (LTR)
Recovery Time	10 seconds (from Auto Off)
Power Source	120V/60Hz/12A
Dimensions	26" (W) x 24" (D) x 28" (H)
Weight	144 lbs.
Standard Paper Capacity	500 sheets x 2 trays, and 100-sheet Bypass tray
Optional Paper Capacity	500 sheets x 2 trays or 2,000-sheet Large Capacity Tray (LCT)
Paper Size	5.5" x 8.5" to 11" x 17" / A6 to A3
Paper Weight	16 - 28 lb. Bond/60 - 105g/m ² (Tray 1) 14 - 42 lb. Bond/52 - 157g/m ² (Tray 2 and Bypass) 17 - 28 lb. Bond/64 - 105g/m ² (Duplex)
Reduction Ratios	25%, 50%, 65%, 73%, 78%, 85%, 93%
Enlargement Ratios	121%, 129%, 155%, 200%, 400%
Zoom	25% to 400% in 1% increments
Standard Features	Auto Magnification, Auto Paper Select, Auto Tray Switch, Center/Border Erase, Combine Mode, Cover Insertion, Date Stamp, Directional Magnification, 100% Duplex Productivity, Electronic/Rotate Sorting, English Pre-Set Stamps, 10 Job Programs, Negative/Positive, OHP Slip Sheet, Page Number Stamp, Paper Designate, Series Copy, Touch Screen Control Panel, 100 User Codes (optional 500 max.)
Optional Features with HDD	Background Numbering, Booklet/Magazine Copy, Document Server (3,000 file capacity), User Stamps

PRINTER SPECIFICATIONS (Option)

Print Speed	8025: 25 ppm 8030: 30 ppm
CPU	RM7035C 466 MHz
Standard Interfaces	10/100BaseTX USB 2.0
Optional Interfaces	IEEE 802.11b Wireless LAN Bluetooth IEEE 1394 IEEE 1284
Memory Capacity	384 MB RAM (shared)
Network Protocol	TCP/IP, IPX/SPX, AppleTalk
Network Operating Systems	Windows 9x/NT4.0/2000/ME/XP/Server 2003, Netware, UNIX; Sun Solaris, HP-UX, SCO
Utilities	OpenServer, Red Hat Linux, IBM AIX, Mac 8.6 - 9.2x, 10.1+, SAP R/3, NDPS Gateway, IBM iSeries/AS/400 [®] using OS/400 Host Print Transform SmartDeviceMonitor, Web SmartDeviceMonitor, DeskTopBinder V2 Lite, Web Image Monitor
Page Description Languages	PCL 5e/6 emulation Savin RPCS
Print Resolution	Adobe PostScript 3 (optional) Up to 600 dpi (2400 x 600 dpi with smoothing)
Grayscale	256 Levels
Fonts for PCL 5e/6	35 Intellifonts, 10 TrueType Fonts, 1 Bitmap, 13 International Fonts
Fonts for PS3	136 PostScript Fonts
Standard Features	Form Overlay, Watermarks, Spool Printing, Sample/Locked/Hold/ Stored Print, Encryption

SCANNER SPECIFICATIONS (Option)

Scanning Speed	Embedded Scanning: 52 ipm (@ 200 dpi)
Scanning Resolution	600 dpi
Grayscale	256 Levels
Scan Area	Up to 11" x 17"
Interface (standard)	10/100BaseTX
Interface (optional)	IP Over IEEE 1394, IEEE 802.11b
Protocol	Wireless LAN TCP/IP, IPX, SMTP, POP 3, SMB, FTP, NCP, LDAP
Memory Capacity	384 MB RAM (shared)
File Types	Single page TIFF/JPEG/PDF, Multi-page TIFF/PDF

FAX SPECIFICATIONS (Option)

Circuit Compatibility	PSTN, PBX
Resolution	ITU-T G3 200 x 200/100 dpi 400 x 400 dpi (Optional)
Compression Method	MH, MR, MMR, JBIG
Scanning Speed	0.40 seconds (LEF)
Modem Speed	33.6 Kbps with Auto Fallback
Transmission Speed	G3: 3 seconds per page (MMR Compression) G3: 2 seconds per page (JBIG Compression)
Memory	4 MB standard/28 MB maximum 320 pages/2,240 pages
Std./Max. Auto Dials	500/2,000
Group Dials	100 (max. 500 numbers per group)
ID Code Programming	4 digits
User Function Key	3 keys
User Codes	100 (500 with optional memory)
Standard Features	Auto Document (6), Book Transmission, Dual Access, Duplex Reception, Image Rotation, 1 Hour Backup
Optional Features	Simultaneous Operation of up to 3 Lines (G3 x 3); LAN-Fax Capability, Internet Faxing (T.37), IP Faxing (T.38), Fax Forwarding to Email/HDD/Folder with Scan/Print Installed

PS490 PAPER BANK (Option)

Paper Size	5.5" x 8.5" to 11" x 17" / A5 to A3
Paper Weight	16 to 28 lb. Bond/60 to 105g/m ²
Paper Capacity	2 x 500 sheets
Dimensions	21.6" (W) x 20.5" (D) x 10.7" (H)

LARGE CAPACITY TRAY PS500 (Option)

Paper Size	8.5" x 11" / A4
Paper Weight	16 to 28 lb. Bond/60 to 105g/m ²
Paper Capacity	2,000 sheets
Dimensions	21.6" (W) x 20.5" (D) x 10.7" (H)

ONE BIN TRAY PT280 (Option)

Paper Size	5.5" x 8.5" to 11" x 17" / A5 to A3
Paper Weight	16 to 28 lb. Bond/60 to 105g/m ²
Paper Capacity	125 sheets

SR790 FINISHER 1000 (Option)

Paper Size	5.5" x 8.5" to 11" x 17" / A6 to A3
Paper Weight	16 to 42 lb. Bond/60 to 157g/m ²
Stack Capacity	Proof Tray: 250 sheets Shift Tray: 1,000 sheets (8.5" x 11" or smaller) 500 sheets (8.5" x 14" or larger)

Staple Capacity	50 sheets (8.5" x 11" or smaller) 30 sheets (8.5" x 14" or larger)
Staple Position	3 positions (1 staple/2 positions; 2 staples/1 position)
Dimensions	20.7" (W) x 20.5" (D) x 31.1" (H)

SR820 FINISHER (Option)

Paper Size	7.25" x 10.5" to 11" x 17" / A3 to B5 LEF
Paper Weight	16 to 34 lb. Bond/60 to 128g/m ²
Stack Capacity	500 sheets
Staple Capacity	30 sheets (8.5" x 11" or smaller) 20 sheets (8.5" x 14" or larger)
Staple Position	1 Position
Dimensions	13.8" (W) x 19.3" (D) x 9.1" (H)

ADDITIONAL OPTIONS

ARDF DF83 (50-sheet)
Platen Cover Type 1018
Adobe PostScript 3 Type 3030
Printer/Scanner Kit Type 3030
Fax Type 3030
G3 Interface Type 3030
400 dpi/SAF
Handset Type 1018
20 GB Hard Disk Drive Type 3030
FAC20 Cabinet
Bridge Unit Type 1027
Internal Shift Sort Tray Type 1027
Key Counter Bracket Type 1027
User Account Enhancement Kit Type E
File Format Converter Type B
Data Overwrite Security Unit Type D
Copy Data Security Unit Type A
IEEE 1394 Interface Board Type B
IEEE 1284 Interface Board Type A
Bluetooth Interface Unit Type 3245
IEEE 802.11b Interface Unit Type H



Savin 8025/8030

[捷多邦，专业PCB打样工厂，24小时加急出货](#)

> DIGITAL IMAGING SYSTEMS

Work smarter,
work faster,
work better.



Savin 8025/8030



savin

Your Environmental Partner

The Savin 8025/8030 is Energy Star[®]-compliant, continuing our longstanding commitment to developing office solutions with superior energy and supply-saving features, including:

- Quick Start-Up (QSU) technology
- Power-saving Sleep modes
- Duplex and Combine Copy modes
- Toner Recycling
- Low noise levels
- Minimal ozone emissions



savin

Savin Five Dedrick Place, West Caldwell, NJ 07006

Savin[®] is a registered trademark of Ricoh Corporation. Windows[®] and Windows[®] 95/98/Me/NT4.0/2000/XP are registered trademarks of Microsoft Corporation. Macintosh[®], Mac[®] OS and AppleTalk[®] are registered trademarks of Apple Computer, Inc. Adobe[®] and PostScript[®] are registered trademarks of Adobe Systems, Inc. PCL[®] is a registered trademark of Hewlett-Packard Company. RPCS[®] is a trademark of Ricoh Company, Ltd.

Savin 8025/8030 Series. Copy, print, scan, fax, manage...securely.

Control Panel
Large touch-screen Control Panel makes navigation easy.

Finisher
500-sheet Finisher with 30-sheet stapler capacity and 1-position stapler produces professional-looking documents quickly and conveniently (option).
1,000-sheet Finisher is also available.

Paper Trays
Two user-adjustable 500-sheet Drawers support paper weights up to 42 lb. – perfect for printing labels, envelopes and other materials.

Document Feeder
50-sheet Automatic Reversing Document Feeder enables productive scanning for one- or two-sided documents up to 11" x 17" (option).

Output Tray
Additional 125-sheet Output Tray automatically separates copy output from fax and print, and lights up when output is present (option).

Duplex Unit
Duplex Unit allows unlimited printing of two-sided documents, reducing filing space and costs.

Bypass Tray
100-sheet Bypass Tray allows for printing on labels or special papers.

Paper Drawers
500 x 2, user-adjustable Paper Bank expands capacity to hold up to five different sizes or orientations of paper (option).

Digital technology has raised the bar on competition in today's business world. Organizations everywhere are moving rapidly to capitalize on the immense gains in productivity and cost savings that can be realized with the right digital systems. The Savin 8025/8030 Digital Imaging Systems give you virtually every tool available

to duplicate, distribute, email and archive your documents – all while protecting the security of your network and your data. The result: your organization is more productive, more responsive, more cost efficient, more secure... and just plain more

Fast, High-Quality Copies

The Savin 8025/8030 Digital Imaging Systems offer all the copy quality and speed your business or work group needs: up to 30 prints per minute and 600 dpi, with an incredibly short first-copy time of 4.4 seconds. Add in the 3,100-sheet paper capacity and a variety of finishing choices, and you've got a powerful digital copier that can enhance your productivity for years to come.

Network Printing: Flexible, Powerful, Secure

Working smarter and faster begins at the network level. The Savin 8025/8030 Series is designed with advanced network printing features that smooth both installation and everyday workflow.

- **10/100 BaseT Ethernet and USB 2.0** interfaces ensure easy connectivity to your network.

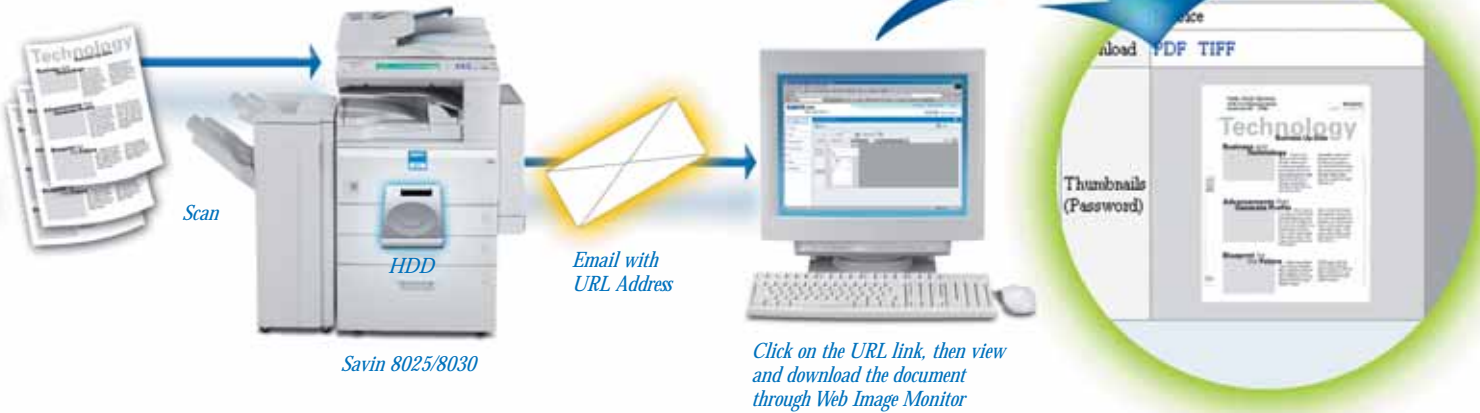
Select the configuration based on the requirements for your office

For productive printing and document handling

For total document needs in a space-saving design

For efficient document management outside the corporate firewall, via the Internet

Scan-to-URL



Scan-to-URL improves information sharing in your organization while minimizing network traffic.

- **PCL5e/6 and Adobe® Postscript® 3™** provide compatibility to both PC and Mac™ platforms.
- **PDF Direct Print** lets you send PDF files directly to the printer, reducing network traffic and boosting productivity. Ideal for printing scanned PDFs.
- **Virtual Mailboxes** eliminate having to store documents in physical mail bins.

Securely Connect To Your Network And Connect To The World

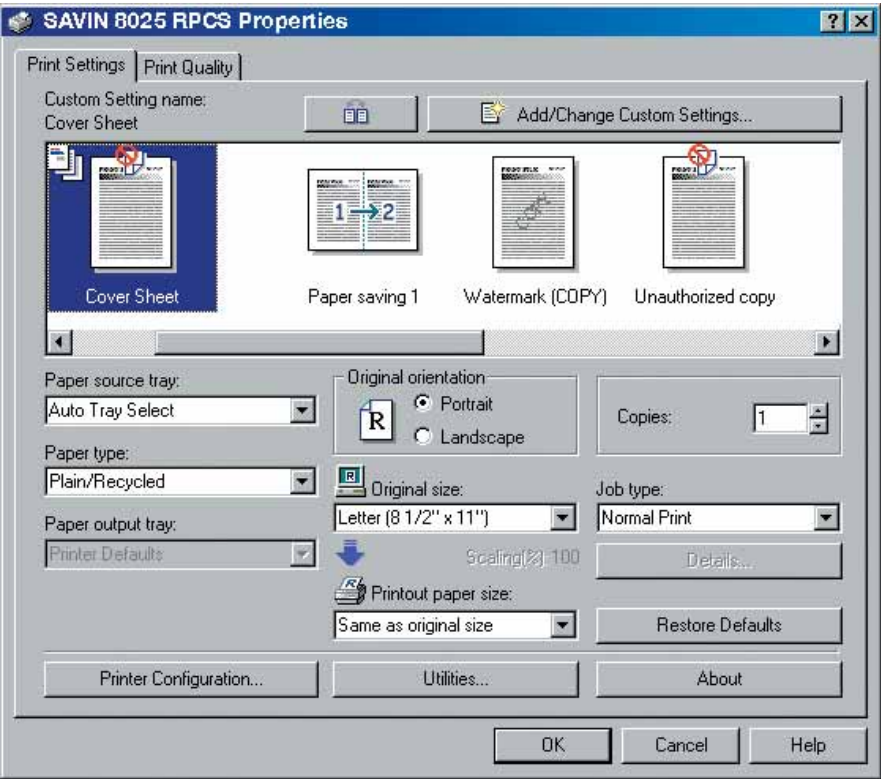
The Savin 8025/8030 Series is a fast, effective and low-cost way to distribute information. It can connect you and your scanned documents to virtually any email address in the world.

- Deliver scanned documents directly to email addresses or automatically file them into folders to share, eliminating the need to detach and save documents manually.
- Scan to a wide selection of file formats, including **TIFF, TIFF-F, PDF and JPEG**.
- Access up to five corporate **LDAP servers**, making efficient use of existing information and saving programming time.

Cut Communication Costs With Advanced Faxing

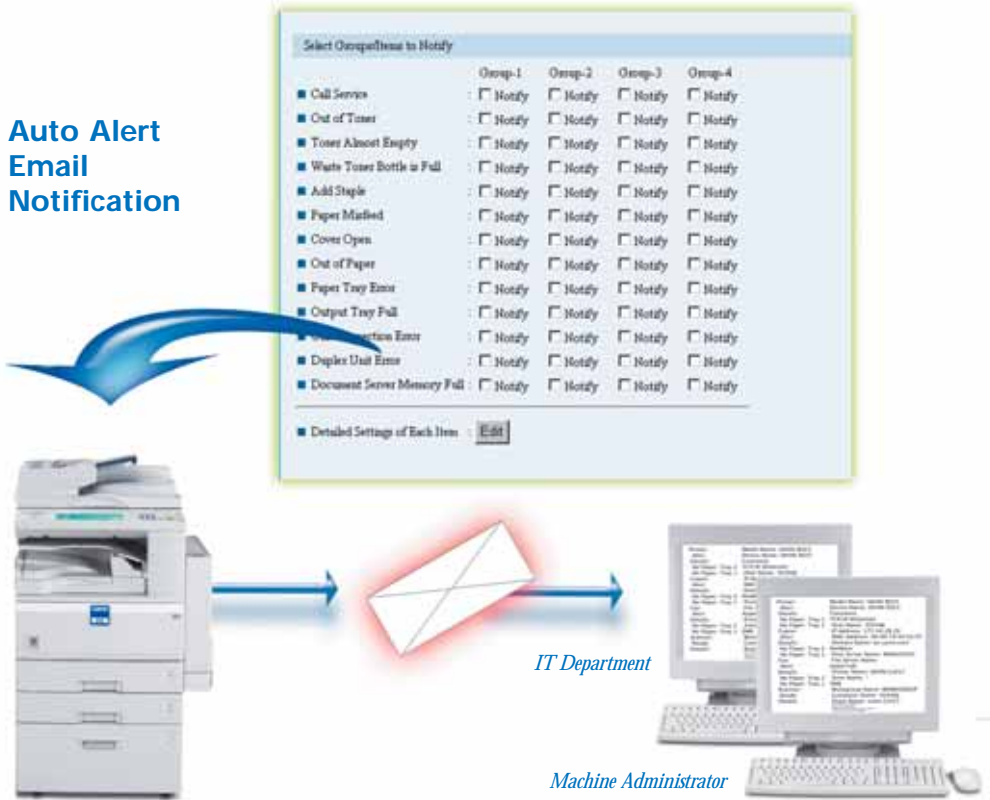
The Savin 8025/8030 Series' 33.6Kbps Modem with standard JBIG Compression can handle up to three G3 lines at once. Or you can elevate faxing from an old-fashioned paper-to-paper transaction to a bold new, inexpensive way of communicating.

- Conveniently fax digital documents directly from your PC with **LAN fax**, eliminating steps and saving time.
- Ensure that documents are automatically routed to critical locations with **Fax Forward** to folder/email/hard drive capabilities.
- Quit paying long distance and international phone costs – bypass your PSTN with fast, high-quality **T.38 IP Faxing** or **T.37 Internet** by sending and receiving documents over your LAN or WAN.



Simplify even the most complex jobs with the icon-based, Savin RPCS (Refined Print Command

Auto Alert Email Notification



The 8025/8030 Series automatically delivers an alert report to designated email addresses when a problem is detected.

System Management From Your Desktop

You're too busy getting the work done for your organization to worry about the status of your peripherals. That's why the Savin 8025/8030 Series is designed to virtually take care of itself: it can even send you emails alerting you if it's low on toner or otherwise needs attention to optimize performance.

If staying on top of your system's performance is something you'd rather control yourself, just launch Web Image Monitor to check status, program settings and make changes to your address books from a Web browser.

documentmall

Manage Your Electronic Documents

DocumentMall allows users to securely store, edit, share and retrieve documents and files from their PCs via the Internet, and securely scan hardcopy documents directly from Savin 8025/8030 MFPs. This powerful document management

application is accessible 24/7 and provides businesses with a managed and hosted off-site environment that allows knowledge workers in remote locations to collaborate real-time on projects in a secure environment. Advanced search and indexing software and unlimited scalability permit businesses of any size to use DocumentMall as a versatile resource.

Embedded Software Architecture

Customize Your System, Enhance Your Workflow

The Savin 8025/8030 can easily be customized to meet your needs by controlling features such as the operation panel, printing, saving files and scanning. It features Embedded Software Architecture, an innovative Java (J2ME)-compatible software development platform that exceeds industry standards. Embedded Software Architecture allows for the development of key applications that run on the Savin 8025/8030 MFPs, dramatically enhancing your organization's workflow.



The 50-Sheet ARDF automatically processes a variety of paper types and sizes – including original sets containing mixed sizes.



Print envelopes and quickly change paper sizes with easy-to-use paper guides.



The optional 1,000-Sheet Finisher offers offset stacking and 50-sheet three-position stapling.

Savin 8025/8030

Savin 8025/8030 Series. Copy, print, scan, fax, manage...securely.

Control Panel
Large touch-screen Control Panel makes navigation easy.

Finisher
500-sheet Finisher with 30-sheet stapler capacity and 1-position stapler produces professional-looking documents quickly and conveniently (option).
1,000-sheet Finisher is also available.

Paper Trays
Two user-adjustable 500-sheet Drawers support paper weights up to 42 lb. – perfect for printing labels, envelopes and other materials.

Document Feeder
50-sheet Automatic Reversing Document Feeder enables productive scanning for one- or two-sided documents up to 11" x 17" (option).

Output Tray
Additional 125-sheet Output Tray automatically separates copy output from fax and print, and lights up when output is present (option).

Duplex Unit
Duplex Unit allows unlimited printing of two-sided documents, reducing filing space and costs.

Bypass Tray
100-sheet Bypass Tray allows for printing on labels or special papers.

Paper Drawers
500 x 2, user-adjustable Paper Bank expands capacity to hold up to five different sizes or orientations of paper (option).

Digital technology has raised the bar on competition in today's business world. Organizations everywhere are moving rapidly to capitalize on the immense gains in productivity and cost savings that can be realized with the right digital systems. The Savin 8025/8030 Digital Imaging Systems give you virtually every tool available

Fast, High-Quality Copies
The Savin 8025/8030 Digital Imaging Systems offer all the copy quality and speed your business or work group needs: up to 30 prints per minute and 600 dpi, with an incredibly short first-copy time of 4.4 seconds. Add in the 3,100-sheet paper capacity and a variety of finishing choices, and you've got a powerful digital copier that can enhance your productivity for years to come.

Network Printing: Flexible, Powerful, Secure
Working smarter and faster begins at the network level. The Savin 8025/8030 Series is designed with advanced network printing features that smooth both installation and everyday workflow.

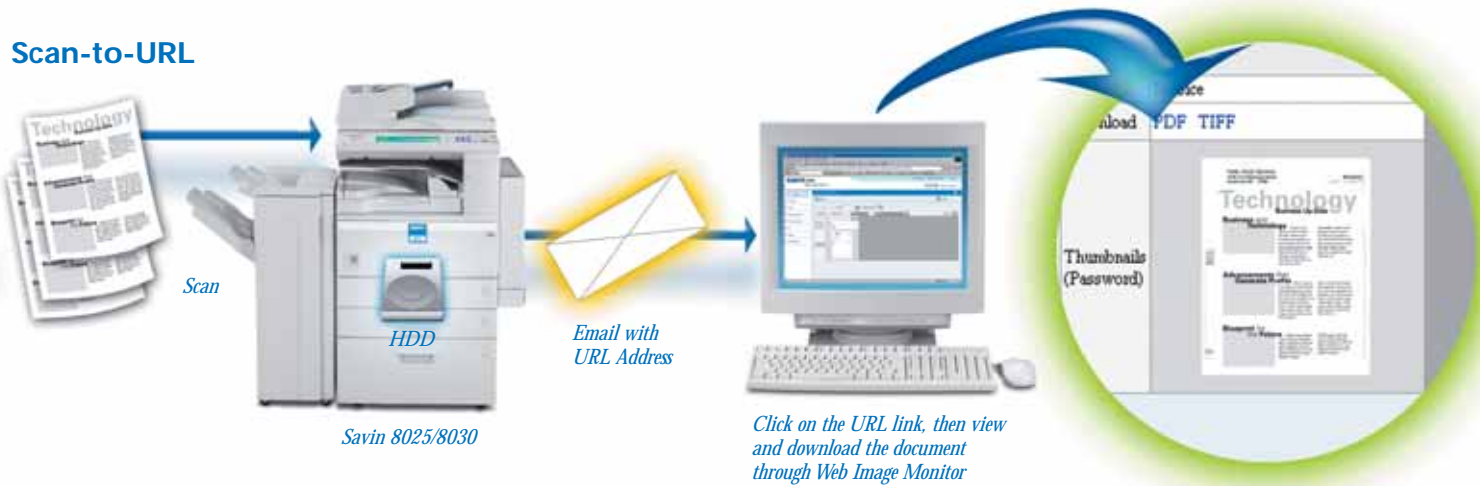
- **10/100 BaseT Ethernet and USB 2.0** interfaces ensure easy connectivity to your network.

Select the configuration based on the requirements for your office

For productive printing and document handling

For total document needs in a space-saving design

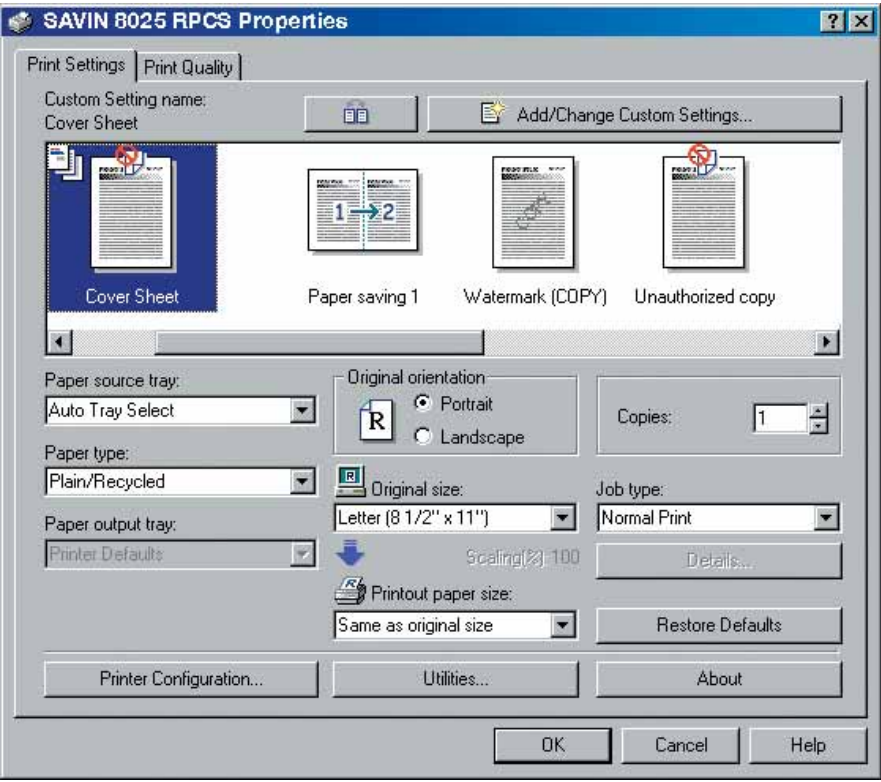
For efficient document management outside the corporate firewall, via the Internet



Scan-to-URL improves information sharing in your organization while minimizing network traffic.

- **PCL5e/6 and Adobe® Postscript® 3™** provide compatibility to both PC and Mac™ platforms.
- **PDF Direct Print** lets you send PDF files directly to the printer, reducing network traffic and boosting productivity. Ideal for printing scanned PDFs.
- **Virtual Mailboxes** eliminate having to store documents in physical mail bins.

Securely Connect To Your Network And Connect To The World
The Savin 8025/8030 Series is a fast, effective and low-cost way to distribute information. It can connect you and your scanned documents to virtually any email address in the world.

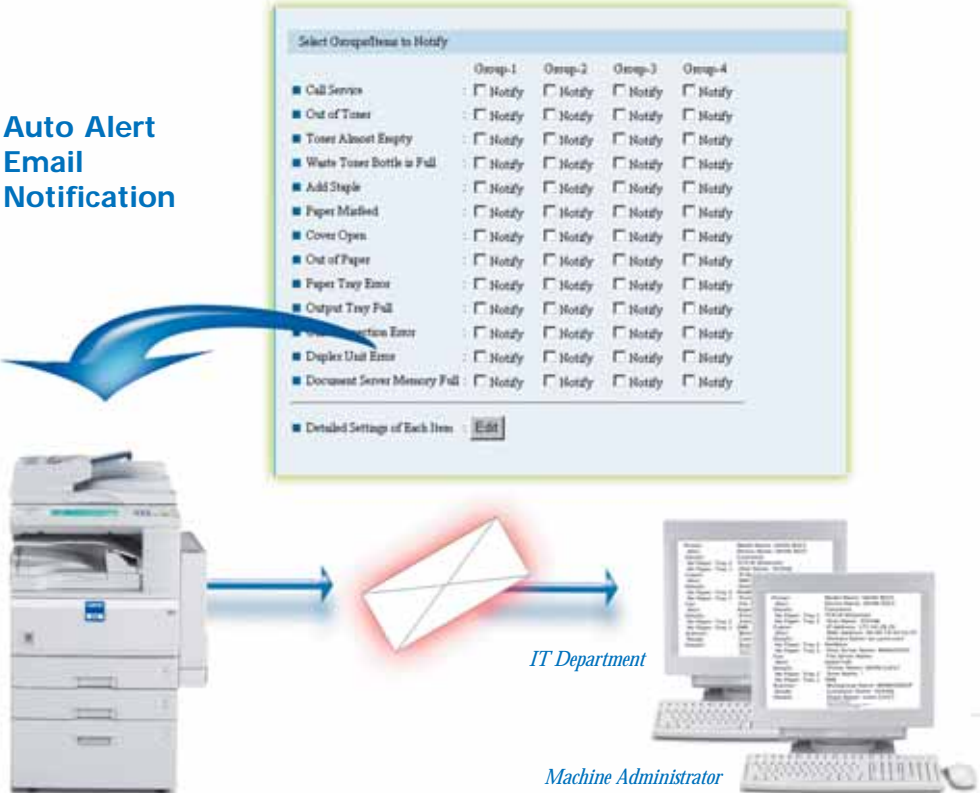


Simplify even the most complex jobs with the icon-based, Savin RPCS (Refined Print Command Structure) interface.

- Deliver scanned documents directly to email addresses or automatically file them into folders to share, eliminating the need to detach and save documents manually.
- Scan to a wide selection of file formats, including **TIFF, TIFF-F, PDF and JPEG**.
- Access up to five corporate **LDAP servers**, making efficient use of existing information and saving programming time.

Cut Communication Costs With Advanced Faxing
The Savin 8025/8030 Series' 33.6Kbps Modem with standard JBIG Compression can handle up to three G3 lines at once. Or you can elevate faxing from an old-fashioned paper-to-paper transaction to a bold new, inexpensive way of communicating.

- Conveniently fax digital documents directly from your PC with **LAN fax**, eliminating steps and saving time.
- Ensure that documents are automatically routed to critical locations with **Fax Forward** to folder/email/hard drive capabilities.
- Quit paying long distance and international phone costs – bypass your PSTN with fast, high-quality **T.38 IP Faxing** or **T.37 Internet** by sending and receiving documents over your LAN or WAN.



The 8025/8030 Series automatically delivers an alert report to designated email addresses when a problem is detected.

System Management From Your Desktop
You're too busy getting the work done for your organization to worry about the status of your peripherals. That's why the Savin 8025/8030 Series is designed to virtually take care of itself: it can even send you emails alerting you if it's low on toner or otherwise needs attention to optimize performance.

If staying on top of your system's performance is something you'd rather control yourself, just launch Web Image Monitor to check status, program settings and make changes to your address books from a Web browser.

documentmall
Manage Your Electronic Documents
DocumentMall allows users to securely store, edit, share and retrieve documents and files from their PCs via the Internet, and securely scan hardcopy documents directly from Savin 8025/8030 MFPs. This powerful document management

application is accessible 24/7 and provides businesses with a managed and hosted off-site environment that allows knowledge workers in remote locations to collaborate real-time on projects in a secure environment. Advanced search and indexing software and unlimited scalability permit businesses of any size to use DocumentMall as a versatile resource.

Embedded Software Architecture
Customize Your System, Enhance Your Workflow
The Savin 8025/8030 can easily be customized to meet your needs by controlling features such as the operation panel, printing, saving files and scanning. It features Embedded Software Architecture, an innovative Java (J2ME)-compatible software development platform that exceeds industry standards. Embedded Software Architecture allows for the development of key applications that run on the Savin 8025/8030 MFPs, dramatically enhancing your organization's workflow.



The 50-Sheet ARDF automatically processes a variety of paper types and sizes – including original sets containing mixed sizes.



Print envelopes and quickly change paper sizes with easy-to-use paper guides.



The optional 1,000-Sheet Finisher offers offset stacking and 50-sheet three-position stapling.

Savin 8025/8030 Series. Copy, print, scan, fax, manage...securely.

Control Panel
Large touch-screen Control Panel makes navigation easy.

Finisher
500-sheet Finisher with 30-sheet stapler capacity and 1-position stapler produces professional-looking documents quickly and conveniently (option).
1,000-sheet Finisher is also available.

Paper Trays
Two user-adjustable 500-sheet Drawers support paper weights up to 42 lb. – perfect for printing labels, envelopes and other materials.

Document Feeder
50-sheet Automatic Reversing Document Feeder enables productive scanning for one- or two-sided documents up to 11" x 17" (option).

Output Tray
Additional 125-sheet Output Tray automatically separates copy output from fax and print, and lights up when output is present (option).

Duplex Unit
Duplex Unit allows unlimited printing of two-sided documents, reducing filing space and costs.

Bypass Tray
100-sheet Bypass Tray allows for printing on labels or special papers.

Paper Drawers
500 x 2, user-adjustable Paper Bank expands capacity to hold up to five different sizes or orientations of paper (option).

Digital technology has raised the bar on competition in today's business world. Organizations everywhere are moving rapidly to capitalize on the immense gains in productivity and cost savings that can be realized with the right digital systems. The Savin 8025/8030 Digital Imaging Systems give you virtually every tool available

Fast, High-Quality Copies
The Savin 8025/8030 Digital Imaging Systems offer all the copy quality and speed your business or work group needs: up to 30 prints per minute and 600 dpi, with an incredibly short first-copy time of 4.4 seconds. Add in the 3,100-sheet paper capacity and a variety of finishing choices, and you've got a powerful digital copier that can enhance your productivity for years to come.

Network Printing: Flexible, Powerful, Secure
Working smarter and faster begins at the network level. The Savin 8025/8030 Series is designed with advanced network printing features that smooth both installation and everyday workflow.

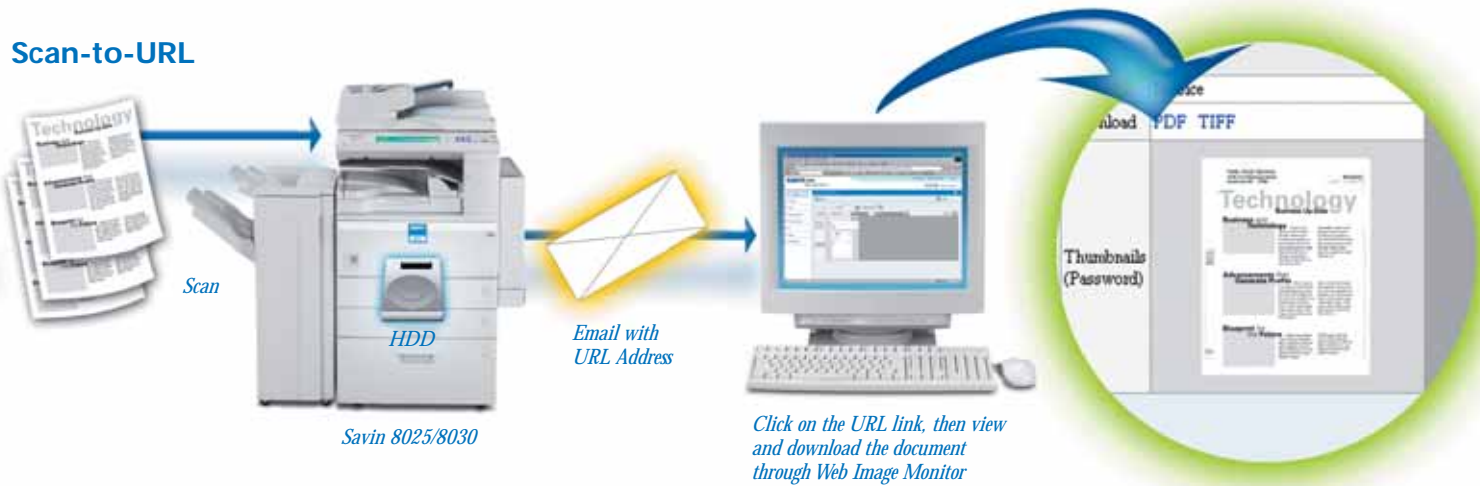
- **10/100 BaseT Ethernet and USB 2.0** interfaces ensure easy connectivity to your network.

Select the configuration based on the requirements for your office

For productive printing and document handling

For total document needs in a space-saving design

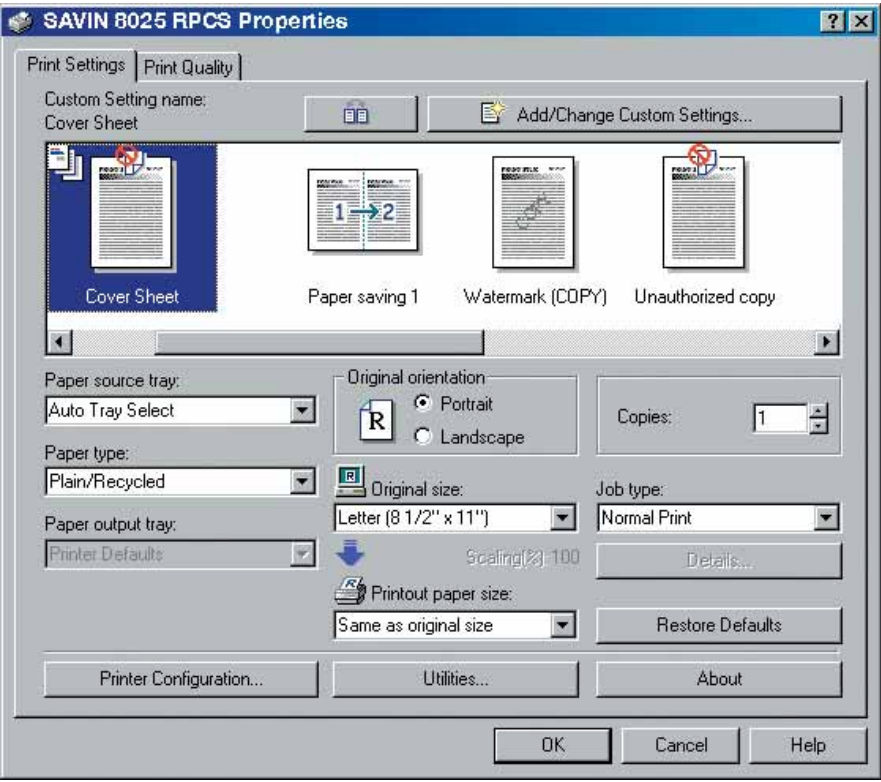
For efficient document management outside the corporate firewall, via the Internet



Scan-to-URL improves information sharing in your organization while minimizing network traffic.

- **PCL5e/6 and Adobe® Postscript® 3™** provide compatibility to both PC and Mac™ platforms.
- **PDF Direct Print** lets you send PDF files directly to the printer, reducing network traffic and boosting productivity. Ideal for printing scanned PDFs.
- **Virtual Mailboxes** eliminate having to store documents in physical mail bins.

Securely Connect To Your Network And Connect To The World
The Savin 8025/8030 Series is a fast, effective and low-cost way to distribute information. It can connect you and your scanned documents to virtually any email address in the world.

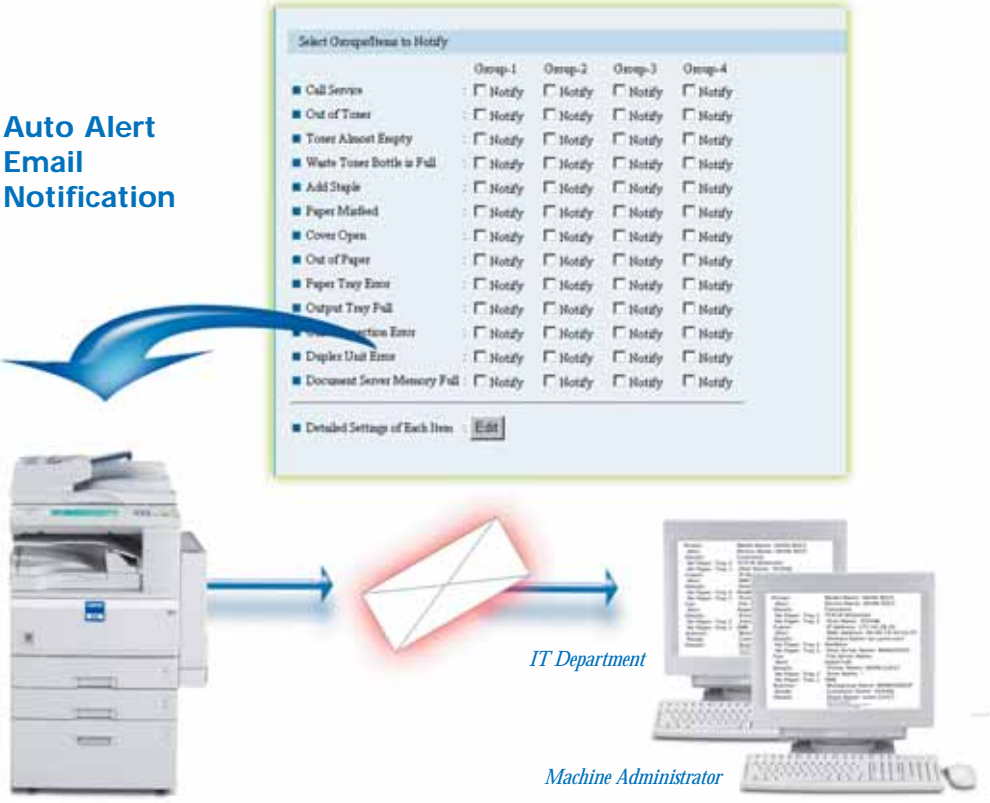


Simplify even the most complex jobs with the icon-based, Savin RPCS (Refined Print Command Structure) interface.

- Deliver scanned documents directly to email addresses or automatically file them into folders to share, eliminating the need to detach and save documents manually.
- Scan to a wide selection of file formats, including **TIFF, TIFF-F, PDF and JPEG**.
- Access up to five corporate **LDAP servers**, making efficient use of existing information and saving programming time.

Cut Communication Costs With Advanced Faxing
The Savin 8025/8030 Series' 33.6Kbps Modem with standard JBIG Compression can handle up to three G3 lines at once. Or you can elevate faxing from an old-fashioned paper-to-paper transaction to a bold new, inexpensive way of communicating.

- Conveniently fax digital documents directly from your PC with **LAN fax**, eliminating steps and saving time.
- Ensure that documents are automatically routed to critical locations with **Fax Forward** to folder/email/hard drive capabilities.
- Quit paying long distance and international phone costs – bypass your PSTN with fast, high-quality **T.38 IP Faxing** or **T.37 Internet** by sending and receiving documents over your LAN or WAN.



The 8025/8030 Series automatically delivers an alert report to designated email addresses when a problem is detected.

System Management From Your Desktop
You're too busy getting the work done for your organization to worry about the status of your peripherals. That's why the Savin 8025/8030 Series is designed to virtually take care of itself: it can even send you emails alerting you if it's low on toner or otherwise needs attention to optimize performance.

If staying on top of your system's performance is something you'd rather control yourself, just launch Web Image Monitor to check status, program settings and make changes to your address books from a Web browser.

documentmall
Manage Your Electronic Documents
DocumentMall allows users to securely store, edit, share and retrieve documents and files from their PCs via the Internet, and securely scan hardcopy documents directly from Savin 8025/8030 MFPs. This powerful document management

application is accessible 24/7 and provides businesses with a managed and hosted off-site environment that allows knowledge workers in remote locations to collaborate real-time on projects in a secure environment. Advanced search and indexing software and unlimited scalability permit businesses of any size to use DocumentMall as a versatile resource.

Embedded Software Architecture
Customize Your System, Enhance Your Workflow
The Savin 8025/8030 can easily be customized to meet your needs by controlling features such as the operation panel, printing, saving files and scanning. It features Embedded Software Architecture, an innovative Java (J2ME)-compatible software development platform that exceeds industry standards. Embedded Software Architecture allows for the development of key applications that run on the Savin 8025/8030 MFPs, dramatically enhancing your organization's workflow.



The 50-Sheet ARDF automatically processes a variety of paper types and sizes – including original sets containing mixed sizes.



Print envelopes and quickly change paper sizes with easy-to-use paper guides.



The optional 1,000-Sheet Finisher offers offset stacking and 50-sheet three-position stapling.

Savin Security And Productivity Solutions

Unauthorized Copy Control Features



Using the RPCS driver, you can print an embedded message and masking pattern on your documents. If the document is copied or stored in the Document Server on a Savin 8025/8030 with the Copy Data Security Unit installed, the output of the copy will gray out.

The Secure Solution For Your Digital Documents And Your Network
With identity and document theft becoming an increasing problem, the Savin 8025/8030 Series was designed with a host of sophisticated security features to safeguard information at every point in the printing, transmission and distribution process.



- **Windows/LDAP Authentication** guards access to your network PC by requiring users to input their existing names and passwords.
- **Restrict unauthorized access** by limiting rights to the users by application.
- **Encryption** protects data from interception, falsification and tampering during transmission.
- **Stored Print/Hold Print** delays output runs until the user releases them during walkup. This prevents unauthorized persons from seeing sensitive documents lying in output trays.
- **DataOverwriteSecurity System (DOSS)** automatically overwrites the “latent image” left in the internal hard drive after a job is completed, making any effort to access and reconstruct residual image data virtually impossible.

Choose Savin
Savin offers a comprehensive range of printing and document solutions and has formed partnerships with numerous solution providers. After evaluating your specific applications and needs, we will provide the right solution to boost your productivity, reduce your costs and improve your competitive edge.

For more information, contact your authorized Savin dealer.



Savin 8025/8030 Specifications

ENGINE/COPIER SPECIFICATIONS	
Configuration	Console
Scanning Element	Flatbed with Moving CCD Array Image Sensor
Printing Process	Single Laser Beam Scanning & Electrophotographic printing
Document Feeding	Optional 50-sheet ARDF
Toner	Dry, Dual Component
System Memory (std./max.)	128/384 MB RAM
Hard Disk Drive	20 GB option
Copy Resolution	600 x 600 dpi
Grayscale	256 levels
Exposure Adjustment	Manual & Automatic
Quantity Indicator	Up to 999
Original Type	Book/Sheet
Maximum Original Size	Up to 11" x 17"
Copy Size	5.5" x 8.5" to 11" x 17"
Copy Type	Plain Paper, Transparencies, Envelopes
Warm-up Time	12 seconds
First Copy Speed	4.4 seconds
Continuous Copying Speed	8025: 25 copies/minute (LTR) 8030: 30 copies/minute (LTR)
Recovery Time	10 seconds (from Auto Off)
Power Source	120V/60Hz/12A
Dimensions	26" (W) x 24" (D) x 28" (H)
Weight	144 lbs.
Standard Paper Capacity	500 sheets x 2 trays, and 100-sheet Bypass tray
Optional Paper Capacity	500 sheets x 2 trays or 2,000-sheet Large Capacity Tray (LCT)
Paper Size	5.5" x 8.5" to 11" x 17" / A6 to A3
Paper Weight	16 – 28 lb. Bond/60 – 105g/m ² (Tray 1) 14 – 42 lb. Bond/52 – 157g/m ² (Tray 2 and Bypass) 17 – 28 lb. Bond/64 – 105g/m ² (Duplex)
Reduction Ratios	25%, 50%, 65%, 73%, 78%, 85%, 93%
Enlargement Ratios	121%, 129%, 155%, 200%, 400%
Zoom	25% to 400% in 1% increments
Standard Features	Auto Magnification, Auto Paper Select, Auto Tray Switch, Center/ Border Erase, Combine Mode, Cover Insertion, Date Stamp, Directional Magnification, 100% Duplex Productivity, Electronic/Rotate Sorting, English Pre-Set Stamps, 10 Job Programs, Negative/ Positive, OHP Slip Sheet, Page Number Stamp, Paper Designate, Series Copy, Touch Screen Control Panel, 100 User Codes (optional 500 max.)
Optional Features with HDD	Background Numbering, Booklet/Magazine Copy, Document Server (3,000 file capacity), User Stamps

PRINTER SPECIFICATIONS (Option)	
Print Speed	8025: 25 ppm 8030: 30 ppm
CPU	RM7035C 466 MHz
Standard Interfaces	10/100BaseTX USB 2.0
Optional Interfaces	IEEE 802.11b Wireless LAN Bluetooth IEEE 1394 IEEE 1284
Memory Capacity	384 MB RAM (shared)
Network Protocol	TCP/IP, IPX/SPX, AppleTalk
Network Operating Systems	Windows 9x/NT4.0/2000/ME/ XP/Server 2003, Netware, UNIX; Sun Solaris, HP-UX, SCO OpenServer, Red Hat Linux, IBM AIX, Mac 8.6 - 9.2x, 10.1+, SAP R/3, NDPS Gateway, IBM iSeries/AS/400® using OS/400 Host Print Transform SmartDeviceMonitor, Web SmartDeviceMonitor, DeskTopBinder V2 Lite Web Image Monitor
Utilities	PCL 5e/6 emulation Savin RPCS Adobe PostScript 3 (optional) Up to 600 dpi (2400 x 600 dpi with smoothing)
Page Description Languages	Savin RPCS
Print Resolution	Up to 600 dpi (2400 x 600 dpi with smoothing)
Grayscale	256 Levels
Fonts for PCL 5e/6	35 Intellifonts, 10 TrueType Fonts, 1 Bitmap, 13 International Fonts
Fonts for PS3	136 PostScript Fonts
Standard Features	Form Overlay, Watermarks, Spool Printing, Sample/Locked/Hold/ Stored Print, Encryption

SCANNER SPECIFICATIONS (Option)	
Scanning Speed	Embedded Scanning: 52 ipm (@ 200 dpi)
Scanning Resolution	600 dpi
Grayscale	256 Levels
Scan Area	Up to 11" x 17"
Interface (standard)	10/100BaseTX
Interface (optional)	IP Over IEEE 1394, IEEE 802.11b Wireless LAN
Protocol	TCP/IP, IPX, SMTP, POP 3, SMB, FTP, NCP, LDAP
Memory Capacity	384 MB RAM (shared)
File Types	Single page TIFF/JPEG/PDF, Multi-page TIFF/PDF

FAX SPECIFICATIONS (Option)	
Circuit Compatibility	PSTN, PBX
Resolution	ITU-T G3 200 x 200/100 dpi 400 x 400 dpi (Optional)
Compression Method	MH, MR, MMR, JBIG
Scanning Speed	0.40 seconds (LEF)
Modem Speed	33.6 Kbps with Auto Fallback
Transmission Speed	G3: 3 seconds per page (MMR Compression) G3: 2 seconds per page (JBIG Compression)
Memory	4 MB standard/28 MB maximum 320 pages/2,240 pages
Std./Max. Auto Dials	500/2,000
Group Dials	100 (max. 500 numbers per group)
ID Code Programming	4 digits
User Function Key	3 keys
User Codes	100 (500 with optional memory)
Standard Features	Auto Document (6), Book Trans- mission, Dual Access, Duplex Reception, Image Rotation, 1 Hour Backup
Optional Features	Simultaneous Operation of up to 3 Lines (G3 x 3); LAN-Fax Capability, Internet Faxing (T.37), IP Faxing (T.38), Fax Forwarding to Email/ HDD/Folder with Scan/Print Installed

PS490 PAPER BANK (Option)	
Paper Size	5.5" x 8.5" to 11" x 17" / A5 to A3
Paper Weight	16 to 28 lb. Bond/60 to 105g/m ²
Paper Capacity	2 x 500 sheets
Dimensions	21.6" (W) x 20.5" (D) x 10.7" (H)

LARGE CAPACITY TRAY PS500 (Option)	
Paper Size	8.5" x 11" / A4
Paper Weight	16 to 28 lb. Bond/60 to 105g/m ²
Paper Capacity	2,000 sheets
Dimensions	21.6" (W) x 20.5" (D) x 10.7" (H)

ONE BIN TRAY PT280 (Option)	
Paper Size	5.5" x 8.5" to 11" x 17" / A5 to A3
Paper Weight	16 to 28 lb. Bond/60 to 105g/m ²
Paper Capacity	125 sheets

SR790 FINISHER 1000 (Option)	
Paper Size	5.5" x 8.5" to 11" x 17" / A6 to A3
Paper Weight	16 to 42 lb. Bond/60 to 157g/m ²
Stack Capacity	Proof Tray: 250 sheets Shift Tray: 1,000 sheets (8.5" x 11" or smaller) 500 sheets (8.5" x 14" or larger)
Staple Capacity	50 sheets (8.5" x 11" or smaller) 30 sheets (8.5" x 14" or larger)
Staple Position	3 positions (1 staple/2 positions; 2 staples/1 position)
Dimensions	20.7" (W) x 20.5" (D) x 31.1" (H)

SR820 FINISHER (Option)	
Paper Size	7.25" x 10.5" to 11" x 17" / A3 to B5 LEF
Paper Weight	16 to 34 lb. Bond/60 to 128g/m ²
Stack Capacity	500 sheets
Staple Capacity	30 sheets (8.5" x 11" or smaller) 20 sheets (8.5" x 14" or larger)
Staple Position	1 Position
Dimensions	13.8" (W) x 19.3" (D) x 9.1" (H)

ADDITIONAL OPTIONS	
ARDF DF83 (50-sheet) Platen Cover Type 1018 Adobe PostScript 3 Type 3030 Printer/Scanner Kit Type 3030 Fax Type 3030 G3 Interface Type 3030 400 dpi/SAF Handset Type 1018 20 GB Hard Disk Drive Type 3030 FAC20 Cabinet Bridge Unit Type 1027 Internal Shift Sort Tray Type 1027 Key Counter Bracket Type 1027 User Account Enhancement Kit Type E File Format Converter Type B Data Overwrite Security Unit Type D Copy Data Security Unit Type A IEEE 1394 Interface Board Type B IEEE 1284 Interface Board Type A Bluetooth Interface Unit Type 3245 IEEE 802.11b Interface Unit Type H	

Savin 8025/8030

> DIGITAL IMAGING SYSTEMS

Work smarter,
work faster,
work better.



Savin 8025/8030



Savin Five Dedrick Place, West Caldwell, NJ 07006
Savin® is a registered trademark of Ricoh Corporation. Windows® and Windows® 95/98/Me/NT4.0/2000/XP are registered trademarks of Microsoft Corporation. Macintosh®, Mac® OS and AppleTalk® are registered trademarks of Apple Computer, Inc. Adobe® and PostScript® are registered trademarks of Adobe Systems, Inc. PCL® is a registered trademark of Hewlett-Packard Company. RPCS® is a trademark of Ricoh Company, Ltd.

Your Environmental Partner

The Savin 8025/8030 is Energy Star®-compliant, continuing our longstanding commitment to developing office solutions with superior energy and supply-saving features, including:

- Quick Start-Up (QSU) technology
- Power-saving Sleep modes
- Duplex and Combine Copy modes
- Toner Recycling
- Low noise levels
- Minimal ozone emissions



Savin Security And Productivity Solutions

Unauthorized Copy Control Features



Using the RPCS driver, you can print an embedded message and masking pattern on your documents. If the document is copied or stored in the Document Server on a Savin 8025/8030 with the Copy Data Security Unit installed, the output of the copy will gray out.

The Secure Solution For Your Digital Documents And Your Network
With identity and document theft becoming an increasing problem, the Savin 8025/8030 Series was designed with a host of sophisticated security features to safeguard information at every point in the printing, transmission and distribution process.



- **Windows/LDAP Authentication** guards access to your network PC by requiring users to input their existing names and passwords.
- **Restrict unauthorized access** by limiting rights to the users by application.
- **Encryption** protects data from interception, falsification and tampering during transmission.
- **Stored Print/Hold Print** delays output runs until the user releases them during walkup. This prevents unauthorized persons from seeing sensitive documents lying in output trays.
- **DataOverwriteSecurity System (DOSS)** automatically overwrites the “latent image” left in the internal hard drive after a job is completed, making any effort to access and reconstruct residual image data virtually impossible.

Choose Savin
Savin offers a comprehensive range of printing and document solutions and has formed partnerships with numerous solution providers. After evaluating your specific applications and needs, we will provide the right solution to boost your productivity, reduce your costs and improve your competitive edge.

For more information, contact your authorized Savin dealer.



Savin 8025/8030 Specifications

ENGINE/COPIER SPECIFICATIONS	
Configuration	Console
Scanning Element	Flatbed with Moving CCD Array Image Sensor
Printing Process	Single Laser Beam Scanning & Electrophotographic printing
Document Feeding	Optional 50-sheet ARDF
Toner	Dry, Dual Component
System Memory (std./max.)	128/384 MB RAM
Hard Disk Drive	20 GB option
Copy Resolution	600 x 600 dpi
Grayscale	256 levels
Exposure Adjustment	Manual & Automatic
Quantity Indicator	Up to 999
Original Type	Book/Sheet
Maximum Original Size	Up to 11" x 17"
Copy Size	5.5" x 8.5" to 11" x 17"
Copy Type	Plain Paper, Transparencies, Envelopes
Warm-up Time	12 seconds
First Copy Speed	4.4 seconds
Continuous Copying Speed	8025: 25 copies/minute (LTR) 8030: 30 copies/minute (LTR)
Recovery Time	10 seconds (from Auto Off)
Power Source	120V/60Hz/12A
Dimensions	26" (W) x 24" (D) x 28" (H)
Weight	144 lbs.
Standard Paper Capacity	500 sheets x 2 trays, and 100-sheet Bypass tray
Optional Paper Capacity	500 sheets x 2 trays or 2,000-sheet Large Capacity Tray (LCT)
Paper Size	5.5" x 8.5" to 11" x 17" / A6 to A3
Paper Weight	16 – 28 lb. Bond/60 – 105g/m ² (Tray 1) 14 – 42 lb. Bond/52 – 157g/m ² (Tray 2 and Bypass) 17 – 28 lb. Bond/64 – 105g/m ² (Duplex)
Reduction Ratios	25%, 50%, 65%, 73%, 78%, 85%, 93%
Enlargement Ratios	121%, 129%, 155%, 200%, 400%
Zoom	25% to 400% in 1% increments
Standard Features	Auto Magnification, Auto Paper Select, Auto Tray Switch, Center/ Border Erase, Combine Mode, Cover Insertion, Date Stamp, Directional Magnification, 100% Duplex Productivity, Electronic/Rotate Sorting, English Pre-Set Stamps, 10 Job Programs, Negative/ Positive, OHP Slip Sheet, Page Number Stamp, Paper Designate, Series Copy, Touch Screen Control Panel, 100 User Codes (optional 500 max.)
Optional Features with HDD	Background Numbering, Booklet/Magazine Copy, Document Server (3,000 file capacity), User Stamps

PRINTER SPECIFICATIONS (Option)	
Print Speed	8025: 25 ppm 8030: 30 ppm
CPU	RM7035C 466 MHz
Standard Interfaces	10/100BaseTX USB 2.0
Optional Interfaces	IEEE 802.11b Wireless LAN Bluetooth IEEE 1394 IEEE 1284
Memory Capacity	384 MB RAM (shared)
Network Protocol	TCP/IP, IPX/SPX, AppleTalk
Network Operating Systems	Windows 9x/NT4.0/2000/ME/ XP/Server 2003, Netware, UNIX; Sun Solaris, HP-UX, SCO OpenServer, Red Hat Linux, IBM AIX, Mac 8.6 - 9.2x, 10.1+, SAP R/3, NDPS Gateway, IBM iSeries/AS/400® using OS/400 Host Print Transform SmartDeviceMonitor, Web SmartDeviceMonitor, DeskTopBinder V2 Lite Web Image Monitor
Utilities	PCL 5e/6 emulation Savin RPCS Adobe PostScript 3 (optional) Up to 600 dpi (2400 x 600 dpi with smoothing)
Page Description Languages	256 Levels
Print Resolution	35 Intellifonts, 10 TrueType Fonts, 1 Bitmap, 13 International Fonts
Grayscale	136 PostScript Fonts
Fonts for PCL 5e/6	Form Overlay, Watermarks, Spool Printing, Sample/Locked/Hold/ Stored Print, Encryption

SCANNER SPECIFICATIONS (Option)	
Scanning Speed	Embedded Scanning: 52 ipm (@ 200 dpi)
Scanning Resolution	600 dpi
Grayscale	256 Levels
Scan Area	Up to 11" x 17"
Interface (standard)	10/100BaseTX
Interface (optional)	IP Over IEEE 1394, IEEE 802.11b Wireless LAN
Protocol	TCP/IP, IPX, SMTP, POP 3, SMB, FTP, NCP, LDAP
Memory Capacity	384 MB RAM (shared)
File Types	Single page TIFF/JPEG/PDF, Multi-page TIFF/PDF

FAX SPECIFICATIONS (Option)	
Circuit	PSTN, PBX
Compatibility	ITU-T G3
Resolution	200 x 200/100 dpi 400 x 400 dpi (Optional)
Compression Method	MH, MR, MMR, JBIG
Scanning Speed	0.40 seconds (LEF)
Modem Speed	33.6 Kbps with Auto Fallback
Transmission Speed	G3: 3 seconds per page (MMR Compression) G3: 2 seconds per page (JBIG Compression)
Memory	4 MB standard/28 MB maximum 320 pages/2,240 pages
Std./Max. Auto Dials	500/2,000
Group Dials	100 (max. 500 numbers per group)
ID Code Programming	4 digits
User Function Key	3 keys
User Codes	100 (500 with optional memory)
Standard Features	Auto Document (6), Book Trans- mission, Dual Access, Duplex Reception, Image Rotation, 1 Hour Backup
Optional Features	Simultaneous Operation of up to 3 Lines (G3 x 3); LAN-Fax Capability, Internet Faxing (T.37), IP Faxing (T.38), Fax Forwarding to Email/ HDD/Folder with Scan/Print Installed

PS490 PAPER BANK (Option)	
Paper Size	5.5" x 8.5" to 11" x 17" / A5 to A3
Paper Weight	16 to 28 lb. Bond/60 to 105g/m ²
Paper Capacity	2 x 500 sheets
Dimensions	21.6" (W) x 20.5" (D) x 10.7" (H)

LARGE CAPACITY TRAY PS500 (Option)	
Paper Size	8.5" x 11" / A4
Paper Weight	16 to 28 lb. Bond/60 to 105g/m ²
Paper Capacity	2,000 sheets
Dimensions	21.6" (W) x 20.5" (D) x 10.7" (H)

ONE BIN TRAY PT280 (Option)	
Paper Size	5.5" x 8.5" to 11" x 17" / A5 to A3
Paper Weight	16 to 28 lb. Bond/60 to 105g/m ²
Paper Capacity	125 sheets

SR790 FINISHER 1000 (Option)	
Paper Size	5.5" x 8.5" to 11" x 17" / A6 to A3
Paper Weight	16 to 42 lb. Bond/60 to 157g/m ²
Stack Capacity	Proof Tray: 250 sheets Shift Tray: 1,000 sheets (8.5" x 11" or smaller) 500 sheets (8.5" x 14" or larger)
Staple Capacity	50 sheets (8.5" x 11" or smaller) 30 sheets (8.5" x 14" or larger)
Staple Position	3 positions (1 staple/2 positions; 2 staples/1 position)
Dimensions	20.7" (W) x 20.5" (D) x 31.1" (H)

SR820 FINISHER (Option)	
Paper Size	7.25" x 10.5" to 11" x 17" / A3 to B5 LEF
Paper Weight	16 to 34 lb. Bond/60 to 128g/m ²
Stack Capacity	500 sheets
Staple Capacity	30 sheets (8.5" x 11" or smaller) 20 sheets (8.5" x 14" or larger)
Staple Position	1 Position
Dimensions	13.8" (W) x 19.3" (D) x 9.1" (H)

ADDITIONAL OPTIONS	
ARDF DF83 (50-sheet) Platen Cover Type 1018 Adobe PostScript 3 Type 3030 Printer/Scanner Kit Type 3030 Fax Type 3030 G3 Interface Type 3030 400 dpi/SAF Handset Type 1018 20 GB Hard Disk Drive Type 3030 FAC20 Cabinet Bridge Unit Type 1027 Internal Shift Sort Tray Type 1027 Key Counter Bracket Type 1027 User Account Enhancement Kit Type E File Format Converter Type B Data Overwrite Security Unit Type D Copy Data Security Unit Type A IEEE 1394 Interface Board Type B IEEE 1284 Interface Board Type A Bluetooth Interface Unit Type 3245 IEEE 802.11b Interface Unit Type H	

Savin 8025/8030

> DIGITAL IMAGING SYSTEMS

Work smarter,
work faster,
work better.



Savin 8025/8030



Savin Five Dedrick Place, West Caldwell, NJ 07006
Savin® is a registered trademark of Ricoh Corporation. Windows® and Windows® 95/98/Me/NT4.0/2000/XP are registered trademarks of Microsoft Corporation. Macintosh®, Mac® OS and AppleTalk® are registered trademarks of Apple Computer, Inc. Adobe® and PostScript® are registered trademarks of Adobe Systems, Inc. PCL® is a registered trademark of Hewlett-Packard Company. RPCS® is a trademark of Ricoh Company, Ltd.

Your Environmental Partner

The Savin 8025/8030 is Energy Star®-compliant, continuing our longstanding commitment to developing office solutions with superior energy and supply-saving features, including:

- Quick Start-Up (QSU) technology
- Power-saving Sleep modes
- Duplex and Combine Copy modes
- Toner Recycling
- Low noise levels
- Minimal ozone emissions

