

4051/4060/4075

> DIGITAL IMAGING SYSTEMS

**The New
Benchmark
In Productivity
And Security**



Savin 4051/4060/4075



savin®

Savin 4051/4060/4075 Series – The

Meet the SAVIN® 4051/4060/4075 Series – quite simply the most advanced multifunctional systems we've ever introduced. Featuring high-performance digital technology, intelligent connectivity choices, expert document production capabilities, and state-of-the-art document security functionality, the 4051/4060/4075 Series is ideal for corporate workgroups, centralized copy and reprographic centers, and Print-for-Pay facilities. And, whether you're working with electronic documents from the desktop or with hard-copy while standing in front of the system, you'll have access to all of the 4051/4060/4075 Series' powerful document production, management, and distribution capabilities.



Just One Gets The Job Done

With the Savin 4051/4060/4075 Series, you get everything you need in a single system...

- **High-Volume Digital Copier**
- **On Demand Production Printer**
- **Versatile and Productive Network Scanner**

Plus, each device ships standard with powerful device and document management utilities, which allow IT staff and end-users to monitor and manage the 4051/4060/4075 Series from the desktop or at the system itself.

Make Every Workday More Productive

With the Savin 4051/4060/4075 Series, you'll get through more work – with greater efficiency than you ever thought possible...

Fast...

At speeds of 51, 60 and 75 PPM, the 4051/4060/4075 Series speeds you through even the busiest production days. Plus, with true 1200 dpi resolution, your documents always present a professional image.

Flexible...

Regardless of what you ask of it, the 4051/4060/4075 Series is always up to the task, thanks to a variety of capabilities that automate the document production process and reduce user-intervention:

- **Highly productive One-Pass Duplex Scanner with 100-sheet capacity and Job Build capability**
- **8,300 sheet total paper capacity**
- **Scan Once, Print Many**
- **Covers, Tabs, Chapters, Collating, Page Numbering, Stamping, Stapling and Punching**

Final Word On Office Productivity.

Finished...

Choose from a variety of finishing options to produce professionally finished documents at the touch of a button – or click of the mouse.

Saddle Stitch Finisher –

allows users to create perfectly finished newsletters, mailers, booklets, manuals, and more.

100-Sheet Multi-Position

Stapling Finisher – ideal for finishing larger document sets.

50-Sheet Multi-Position Stapling

Finisher – perfect for finishing everyday business documents.

9-Bin Addressable Mailbox – enables users to direct printed output to a specified location, keeping jobs separate in a busy workgroup environment. This option is available with the Saddle-Stitch or 50-Sheet Finisher.

Z-Folding Unit – helps customers finish more documents in-house, reducing the time and cost of outsourcing (available with Saddle-Stitch Finisher).



Additionally, all three Finisher options offer a 3,000-sheet capacity and a user-selectable two and three hole punch option, which eliminates the need to purchase expensive pre-drilled paper.

Security In An Insecure World

Intellectual property is the lifeblood of successful businesses, and with more and more of it residing in cyberspace, you need a solution that will protect those valuable assets. The Savin 4051/4060/4075 Series incorporates advanced security capabilities designed to give you complete peace of mind – particularly when the system resides on your network.



Windows Authentication – Prevents unauthorized usage of the system as users must input their “User Name/Password” – the same one used to login to their PC, eliminating the need to remember an additional password – prior to using the system. Upon successful login, the 4051/4060/4075 Series’ Scan-

to-e-mail capability is activated and the authenticated user name is sent to the “Sender’s Name” field.

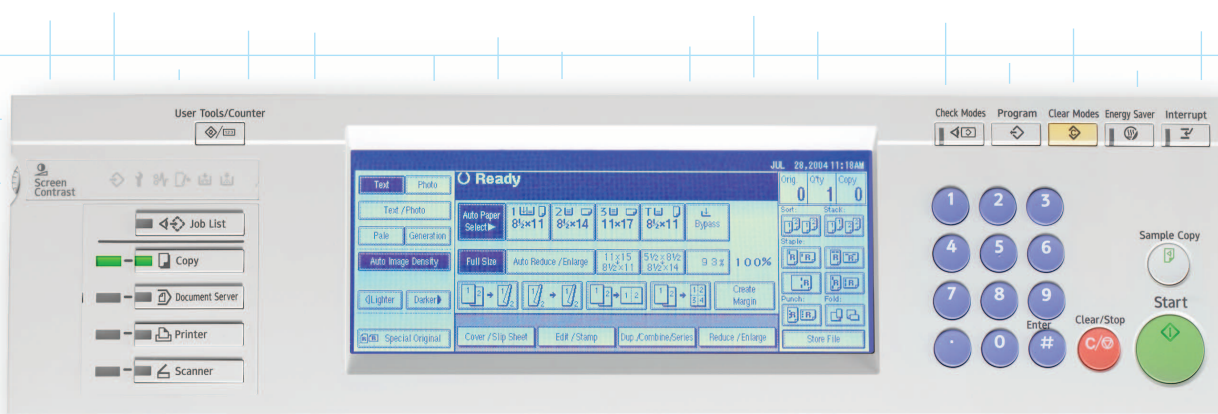
DataOverwriteSecurity System (DOSS)

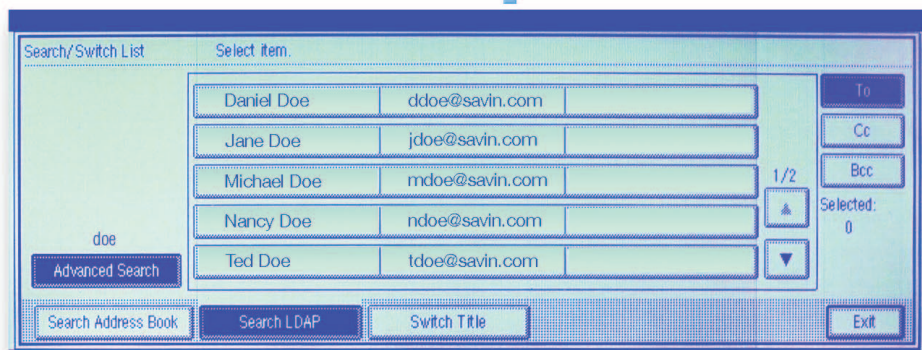
– Provides automatic overwriting of temporary data on the hard drive after each copy, scan or print job. The data is overwritten a minimum of three times, which significantly reduces the possibility of information theft or unauthorized retrieval, and conforms to National Security Agency (NSA) recommendations for managing classified information.

Removable Hard Drive (RHD) – Easily manage classified and/or sensitive information with the Removable Hard Drive option. With this option, the Savin 4051/4060/4075 Series’ internal hard drive is mounted externally in a secure bay, from which it can be unlocked, removed, and stored in a secure location after processing classified information. For added security, you can purchase an additional hard drive, which enables you to keep classified and unclassified information completely separate.

Intuitive Control Panel

The large, user-friendly Touch Panel Display ensures easy access to all of the Savin 4051, 4060 and 4075's functions.





LDAP support from the Control Panel lets you plug into your company's global e-mail address book.

Intelligent Document Distribution Solution

Combining the power of the Savin 4051/4060/4075 Series, your LAN, and the Internet means that you can quickly digitize information and then send it where it needs to be – across the country or around the globe – virtually instantaneously.

Capture...

Quickly scan existing hardcopy using the 4051/4060/4075 Series' One-Pass Duplex Scanner and/or Platen Glass.

Send...

With just a few keystrokes, scanned documents are swiftly dispatched to multiple e-mail addresses, network folders, and/or desktop management applications, like Savin's DeskTopBinder. Plus, users can enter destination addresses directly from the 4051/4060/4075 Series' Touch Panel Display (Ad-hoc) or search for destinations in the corporate address book using Lightweight Directory Access Protocol (LDAP).

Store...

Savin's Document Server Technology intelligently manages hardcopy and electronic files, while also providing an advanced Print-on-Demand solution.

You Can...

Store documents – digital files and scanned hardcopy – in the Document Server, print them when you need them, and eliminate re-transmission or re-scanning of originals.

Combine electronic files and scanned hardcopy to create completely new documents.

Assign a private PIN code to documents going to the Document Server and ensure document confidentiality.

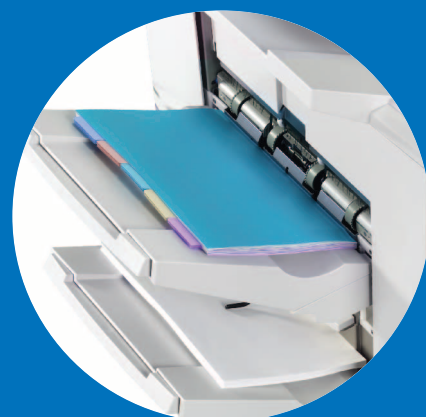
View documents in the Document Server, combine multiple stored documents into a new file, and apply finishing selections from the workstation using Savin's DeskTopBinder software or a standard Web browser.



Insert pre-printed sheets as covers and slipsheets with the post-process Interposer.



Run multiple paper stocks – including tabs and covers – from the internal paper trays.



Multiple finishing options provide the capability to create professional, finished documents in-house.

Savin

4051/4060/4075

Customize A Savin 4051/4060/4075 To Meet Your Specific Requirements



4051/4051sp*

Shown with Large Capacity Tray,
50-Sheet Finisher and 9-Bin Mailbox

*SP Model includes Scan/Print Kit and
384 MB Total RAM

Options:

50-Sheet Finisher (SR850)
100-Sheet Finisher (SR841)
Saddle Stitch Finisher (SR861)
Z-Fold Unit (w/SR861 only)
2/3 Hole Punch Unit
Large Capacity Tray
9-Bin Mailbox (w/SR850/SR861 only)



4060/4060sp*

Shown with Saddle Stitch Finisher, Large
Capacity Tray, Interposer and Z-Fold Unit

*SP Model includes Scan/Print Kit and
384 MB Total RAM

Options:

50-Sheet Finisher (SR850)
100-Sheet Finisher (SR841)
Saddle Stitch Finisher (SR861)
Z-Fold Unit (w/SR861 only)
2/3 Hole Punch Unit
Large Capacity Tray
9-Bin Mailbox (w/SR850/SR861 only)



4075/4075sp*

Shown with 100-Sheet Finisher and
Large Capacity Tray

*SP Model includes Scan/Print Kit and
384 MB Total RAM

Options:

50-Sheet Finisher (SR850)
100-Sheet Finisher (SR841)
Saddle Stitch Finisher (SR861)
Z-Fold Unit (w/SR861 only)
2/3 Hole Punch Unit
Large Capacity Tray
9-Bin Mailbox (w/SR850/SR861 only)

Production Printing Made Simple

When you have a lot of printing to do,
you'll really appreciate what the Savin
4051/4060/4075 Series can do for you...

Increase user productivity with Savin's
unique Refined Print Command Stream
(RPCS) Driver. This intuitive, icon-
based print driver allows users to apply
output selections and run print jobs
with a single mouse click. Plus, users

can customize output icons based on
specific job requirements and then save
and share them with co-workers.

Access all of the 4051/4060/4075 Series'
document production capabilities –
including Covers, Tabs, Chapters, 11" x
17" Output, Booklets, Page Numbering,
Stamps, and all Finishing selections –
directly from the desktop.

Open Architecture

Embedded Software Architecture

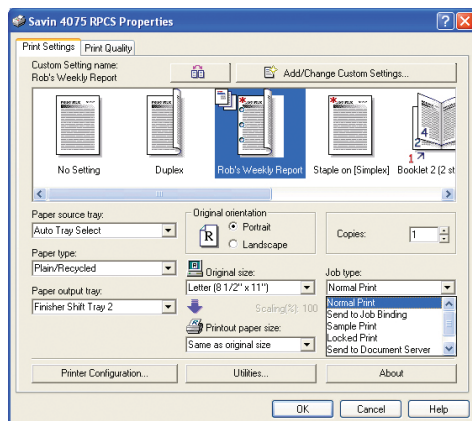
The Savin 4051/4060/4075 models
exceed industry standards with Savin's
Embedded Software Architecture™, an
innovative Java (J2ME) compatible
software development platform. The
Embedded Software Architecture™ allows
for the development of key applications
that run on Savin MFPs and laser printers,
dramatically enhancing your organization's
workflow. The Savin 4051/4060/4075
can easily be customized to meet your

needs by controlling features such as:
the operation panel, printing, saving
files, and scanning. For more infor-
mation on the *Embedded Software
Architecture™* platform please go to
www.savin.com/esa.

Ready To Work Where You Work

Designed for "results oriented" business
environments like yours, the Savin
4051/4060/4075 Series gives you all
the tools you need to more efficiently –
and cost-effectively – manage all aspects
of the document workflow.

For more information contact
your authorized Savin dealer.



Savin 4051/4060/4075 Specifications

GENERAL SPECIFICATIONS

Printing Process	Four laser beams and electro-photographic printing Console
Configuration	128 MB/40 GB HDD
Standard Memory	384 MB/40 GB HDD
Maximum Memory	30 seconds (from power off)
Warm-Up Time	1 to 999
Quantity Indicator	120V/60Hz/20A (requires dedicated 20A outlet)
Power Source	28" x 30" x 46"
Dimensions (WxDxH)	Less than 447.5 lbs.
Weight	1" Tray: 1550 sheets x 2 (tandem) = 3,100 (letter)
Standard Paper Feed	2 nd & 3 rd Tray: 550 each (user adjustable)
Bypass	100 sheets
Total Standard/Max. Paper Size	4,300/8,300 sheets
Paper Size	5.5" x 8.5" to 11" x 17" (12" x 18" Bypass Tray)
Paper Weight	14 lb. - 34 lb. Bond/14 lb. - 80 lb. Cover (Bypass - Thick Paper Mode)

ENGINE SPECIFICATIONS

First Copy Speed	4051/4060: 4.2 seconds 4075: 3.5 seconds
Copying Speed	4051: 51 copies/minute multiple sets (Letter LEF) 4060: 60 copies/minute multiple sets (Letter LEF) 4075: 75 copies/minute multiple sets (Letter LEF)
Copy Resolution	True 1200 x 1200 dpi
Grayscale	256 levels
Original Type	Book/Sheet
Original Size	Up to 11" x 17" (12" x 18" Using Platen)
Copy Size	5.5" x 8.5" to 11" x 17" (12" x 18" Bypass Tray)
Reproduction Ratios	50%, 65%, 73%, 78%, 85% 93%, 121%, 129%, 155%, 200%, 400%
Zoom	25% - 400% in 1% increments

SYSTEM ACCESSORIES

Automatic Document Feeder (Standard)	
Original Size	5.5" x 8.5" to 11" x 17"
Original Paper Weight	11 lb. - 34 lb. Simplex/14 lb. - 34 lb. Duplex
Original Stack Capacity	100 sheets

OPTIONS

Large Capacity Tray (LCT) (RT43)	
Paper Size	8.5" x 11" LEF
Paper Weight	14 - 34 lb. Bond
Paper Capacity	4,000 sheets (20 lb. Bond)
Dimensions (WxDxH)	12.4" x 18.0" x 25.9"
Weight	Less than 44 lbs.

LG (8.5" x 14") Option for LCT Type 1075	
Enables the feeding of legal-size (8.5" x 14") paper through LCT	
Paper Size	8.5" x 14", 8.5" x 11" SEF
Paper Capacity	2,500 sheets (20 lb. Bond)

9-Bin Mailbox (CS390)	
Compatible with SR850 & SR861 Finishers.	
Cannot be added if configured with SR841 Finisher.	
Number of Bins	9 bins
Stack Capacity Per Bin	100 sheets (20 lb. Bond)
Paper Size	5.5" x 8.5" to 11" x 17"
Dimensions (WxDxH)	21.3" x 23.6" x 26"
Weight	Less than 33 lbs.

Copy Tray (Copy Tray Type 1075)	
Copy Tray is an option to receive output when configured without a Finisher.	
Paper Capacity	500 Sheets (8.5" x 11"), 250 Sheets (8.5" x 14", 11" x 17")

Dimensions (WxDxH)	16" x 13.4" x 2.8"
Weight	1.4 lbs.

11" x 17" Paper Size Tray Type 1075	
Enables feeding of 11" x 17" and 8.5" x 14" paper from Tray 1.	
Paper Size	11" x 17" SEF, 8.5" x 14" SEF, 8.5" x 11" SEF/LEF
Paper Capacity	1,000 sheets
Dimensions (WxDxH)	19.5" x 8.5" x 21.1"
Weight	24.3 lbs.

Tab Sheet Unit (Tab Sheet Holder Type 1075)	
Necessary to feed tab sheets from Tray 2 or Tray 3 (Both trays cannot feed tabs).	
Dimensions (WxDxH)	10.8" x 4.3" x 2.8"
Capacity	100 sheets
Weight	.55 lbs.

OPTIONS

3000 Sheet Finisher w/100-Sheet Stapler (SR841)	
Proof Tray	
Stack Capacity	500 sheets (8.5" x 11" or smaller), 250 sheets (8.5" x 14" or larger) 5.5" x 8.5" - 11" x 17"
Paper Size	14 lb. Bond - 80 lb. Cover (216 g/m ²)
Paper Weight	
Shift Tray	
Stack Capacity	3,000 sheets (8.5" x 11"), 1,500 sheets (8.5" x 14" - 11" x 17") 5.5" x 8.5" - 11" x 17"
Paper Size	14 lb. Bond - 80 lb. Cover (216 g/m ²)
Paper Weight	
Stack Capacity with Stapler	
Staple Capacity Per Set	100 sheets (LT); 50 sheets (11" x 17", 8.5" x 14", 8.5" x 11" SEF)
Staple Position	Top, Bottom, 2 staples, Top Slant
Hole Punching Option (Punch Unit Type 1075)	
Hole Positions	2 or 3 holes switchable
Paper Size	5.5" x 8.5" - 11" x 17"
Paper Weight	14 lb. Bond - 34 lb. Bond
Dimensions (WxDxH)	31.5" x 28.7" x 38.6"
Weight	143 lb. Finisher only
Output Jogger Unit Type 1075	
Secures each finished set in an orderly fashion. Available with SR841 only.	

3000 Sheet Finisher w/50-Sheet Stapler (SR850)	
Proof Tray	
Stack Capacity	250 sheets (8.5" x 11" - 5.5" x 8.5"), 50 sheets (8.5" x 14" - 11" x 17") 5.5" x 8.5" - 11" x 17"
Paper Size	14 lb. Bond - 90 lb. Index
Paper Weight	
Shift Tray	
Stack Capacity	3,000 sheets (8.5" x 11"), 1,500 sheets (8.5" x 14" - 11" x 17") 5.5" x 8.5" - 11" x 17"
Paper Size	14 lb. Bond - 80 lb. Cover (216 g/m ²)
Paper Weight	
Staple Capacity	
Same Paper Size	50 sheets (8.5" x 11" or 5.5" x 8.5") 30 sheets (11" x 17", 8.5" x 14") 30 sheets (5.5" x 8.5", 8.5" x 11", 11" x 17")
Mixed Paper Size	Top, Bottom, 2 staples, Top Slant
Staple Position	
Hole Punching Option (Punch Unit Type 1045)	
Hole Positions	2 or 3 holes switchable
Dimension(WxDxH)	27.6" x 24.4" x 37.8"
Weight	132.3 lbs. - Saddle stitch without punch 136.7 lbs. - Saddle stitch with punch

3000 Sheet Finisher with Saddle Stitch (SR861 Finisher)	
Proof Tray	
Stack Capacity	(1) Not Including Z-Fold Paper 250 sheets (8.5" x 11" or smaller) 50 sheets (8.5" x 14" or larger) (2) Z-Fold Paper Only 30 sheets (8.5" x 14" or larger) 20 sheets (8.5" x 11" or smaller) (3) Mixed* 250 sheets at most (8.5" x 11" or smaller) 50 sheets at most (8.5" x 14" or larger)
*When Z-Fold paper & normal paper are mixed, Z-Fold paper counts as 10 sheets.	
Paper Size	5.5" x 8.5" - 11" x 17" (8.5" x 11" - 11" x 17" Z-Folding Paper)
Paper Weight	14 lb. Bond - 90 lb. Index (17 lb. Bond - 20 lb. Bond/Z-Fold)
Upper Shift Tray*	500 sheets (8.5" x 11") 250 sheets (8.5" x 14", 11" x 17") 100 sheets (5.5" x 8.5")
*Z-Fold Paper cannot be output to Upper Shift Tray.	
Paper Size	5.5" x 8.5" - 11" x 17"
Paper Weight	14 lb. Bond - 90 lb. Index

Lower Shift Tray	
Stack Capacity	(1) Not Including Z-Fold Paper 2,500 sheets (8.5" x 11" LEF) 1,250 sheets (8.5" x 14", 11" x 17", 8.5" x 11" SEF) 500 sheets (A5 LEF) 100 sheets (5.5" x 8.5") (2) Z-Fold Paper Only 30 sheets (8.5" x 14" or larger) 20 sheets (8.5" x 11" or smaller) (3) Mixed* 2,500 sheets (8.5" x 11" LEF) 1,250 sheets (8.5" x 14", 11" x 17", 8.5" x 11" SEF) 500 sheets (A5 LEF) 100 sheets (5.5" x 8.5")
*When Z-Fold paper & normal paper are mixed, Z-Fold paper counts as 10 sheets.	
Paper Size	5.5" x 8.5" - 11" x 17"
Paper Weight	14 lb. Bond - 80 lb. Cover (216 g/m ²) (17 lb. Bond - 20 lb. Bond Z-Fold)

OPTIONS

Staple Capacity	
Same Paper Size	50 sheets (8.5" x 11" or smaller) 30 sheets (8.5" x 14" or larger) 30 sheets (8.5" x 11", 11" x 17")
Mixed Paper Size	
(not including Z-Fold Paper)	
Z-Fold Paper Only	Up to 5 sheets per set (8.5" x 11", 11" x 17")
Mixed Paper Size*	
(including Z-Fold Paper)	5 with Z-Fold/0 without Z-Folding 4 with Z-Fold/0-10 without Z-Folding 3 with Z-Fold/0-20 without Z-Folding 2 with Z-Fold/0-30 without Z-Folding 1 with Z-Fold/0-40 without Z-Folding
*When Z-Fold paper & normal paper are mixed, Z-Fold paper counts as 10 sheets.	
Saddle Stitch	15 sheets (8.5" x 11" - 11" x 17")
Staple Position	Top, Bottom, 2 staples, Top Slant
Saddle Stitch Position	Center 2 positions
Center Folding	1 sheet
w/o stitch	
Hole Punching Option (Punch Unit Type 1045)	
Hole Positions	2 or 3 holes (switchable)
Dimension (WxDxH)	27.6" x 24.4" x 37.8"
Cover Interposer Tray (Type 1075)	
Available with all three finishers.	
Paper Size	5.5" x 8.5" - 11" x 17"
Paper Weight	17 lb. Bond - 110 lb. Index
Paper Capacity	200 sheets (20 lb. Bond)
Paper Set	Center position
Dimensions (WxDxH)	19.7" x 24.4" x 7.9"
Weight	26.5 lbs.
Z-Folding Unit (Type 2105)	
Compatible with SR861 Finisher only.	
Cannot be added if configured with SR841 or SR850.	
Z-Folding Position	Right Fold, Left Fold, Bottom Fold
Paper Size	8.5" x 11" SEF/8.5" x 14" SEF/ 11" x 17" SEF

Copy Connector (Type 2105)	
Connect two machines together via cable.	

File Format Converter (Type B)	
Required when retrieving Document Server data stored via Copy or Print application.	

PRINT CONTROLLER SPECIFICATIONS

Print Speed	4051: 51 prints/minute 4060: 60 prints/minute 4075: 75 prints/minute
CPU	Duron 800 MHz
Host Interface	Standard: Ethernet Network Interface Card, 10Base-T/100Base-TX, Parallel IEEE1284 Optional: Wireless LAN Interface (IEEE 802.11b), USB 2.0, IEEE 1394, Bluetooth
Network Protocol	TCP/IP, IPX/SPX, SMB, Apple Talk
Memory Capacity	384 MB DDR-SDRAM (Standard 128MB + Required 256 MB Memory Option)
PDL	RPCS, PCL 5e/PCL6 (Standard) Adobe PostScript 3 (Optional)
Print Resolution	PCL5e: 600/300 dpi PCL6: 1200/600 dpi PS3: 1200/600 dpi RPCS: 300/600/1200 dpi
Drivers for PCL 5e	Win9x/ME, Win2000, WinNT 4.0, WinXP, WinServer 2003
Drivers for PS3	Win9x/ME, Win2000, WinNT4.0, WinXP, WinServer 2003, Macintosh 8.6 - 9.2x (OS X Classic), Mac OS X Native (v. 10.1 or later)
Drivers for PCL 6	Win9x/ME, Win2000, WinNT 4.0, WinXP, WinServer 2003
Drivers for RPCS	Win9x/ME, Win2000, WinNT 4.0, WinXP, WinServer 2003

SCANNER SPECIFICATIONS

Scan Speed	75 sides/minute (4051/4060/4075)
Optical Resolution	100 dpi - 600 dpi (1200 dpi with TWAIN)
Output Format	PDF, TIFF, JPEG
Interface Support	Standard: 10Base-T/100Base-TX Optional: Wireless LAN Interface (IEEE 802.11b), IEEE 1394 ("IP Over 1394")
Bundled Drivers	Network TWAIN
Scan-to-Email	Yes, up to 500 addresses per send
LDAP Support	Yes, Version 2/Version 3
Max Stored Destination	2,000
Addresses	
Authentication	SMTP/POP before SMTP
Scan-to-Folder	Yes, up to 50 folders per job
Protocol Support	SMB (Server Message Block), FTP (File Transfer Protocol)

Savin®

Savin Corporation Stamford, Connecticut 06904 ©2004 Savin Corporation.

SAVIN® is a registered trademark of Savin Corporation.

Windows® and Windows® 95/98/Me/NT4.0/2000/XP/Server 2003 are registered trademarks of Microsoft Corporation.

All other trademarks are the property of their respective owners. Product specifications subject to change without notice.

♻️ Printed in U.S.A. on recycled paper. (S2013) 35M 10/04

