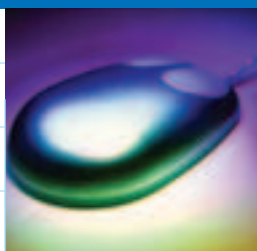


3515/3515F  
3515MF

> DIGITAL IMAGING SYSTEMS

**High**  
**performance**  
**digital imaging**  
**systems**



**Savin 3515/3515F/3515MF**



**savin®**

# Savin 3515/3515F/3515MF – Open T

The SAVIN® 3515, 3515F and 3515MF systems combine walk-up simplicity with easy connectivity in a compact footprint that's perfect for today's busy small office, workgroup or professional practice. Featuring advanced digital technology and 15 PPM output speed, the Savin 3515, 3515F and 3515MF come in one of three configurations, which means that you can select the system that's right for your business...

- Savin 3515 Digital Copier
- Savin 3515F Digital Copier and Fax
- Savin 3515MF Digital Copier, Fax, Scanner and Printer

## Powerful Network Duplex Printing

The Savin 3515 and 3515MF let you consolidate assets by leveraging your existing LAN resource and eliminate multiple desktop printers.

**Standard PCL 5e/6 and Optional Adobe® PostScript® 3™** – ensures compatibility with today's most popular business software.

**Refined Print Command Stream – RPCS™** – features an icon-based user interface that let's you program frequently used document settings, allowing you to output print jobs with a single click.

**Network Printer Management Utilities** – allows you and your IT staff to monitor and manage all of the Savin 3515MF's core functions – print, copy, fax and scan. Choose Web SmartDevice-Monitor or Web Image Monitor and manage the Savin 3515MF via a standard

Web browser. Or, choose SmartDevice-Monitor and manage the Savin 3515MF via an icon located on the Windows Taskbar.

## Better Engineering Maximizes User Productivity

Regardless of the system you choose, you'll get a great digital copier! The Savin 3515, 3515F and 3515MF each provide all the copy features you need.

**Standard 30 Sheet Automatic Document Feeder** – increases your productivity when copying multiple page documents by eliminating the need to manually place each original, including 8.5" x 14" documents.

**Scan Once, Print Many** – enables you to scan originals once and then go back to work while the Savin 3515, 3515F and 3515MF produce the requested number of copies.



*Combine Originals – offers a convenient method of managing documents that require copying on both sides, such as insurance cards, by automatically combining multiple originals onto a single page.*

# The Box, Plug In A Better Solution.

## Intuitive Control Panel

Ensures easy access to all of the Savin 3515, 3515F and 3515MF's functions via a 4-Line Back Lit Display and convenient Directional Cursor Keys.



**Standard Electronic Sorting** – eliminates the need to hand-sort document sets, which increases user productivity.

**850 Sheet Maximum Paper Capacity** – allows you to get through long copy jobs, print jobs and fax receptions without stopping to replace paper. And, a front-load design simplifies paper replenishment tasks.

### High-Performance Fax

In most business environments, documents exist in hardcopy and electronic form, so you need a communications solution that will handle all your fax applications...and that's just what you get when you select the Savin 3515F or 3515MF.

**LAN-Fax\*** – allows you to transmit a fax directly from your workstation via your internal LAN, which eliminates the need for printing documents to the fax.

**Internet Fax (T.37)\*** – enables you to transmit a fax to another Internet fax – or e-mail address – over the Internet, which eliminates busy signals and costly long distance phone charges.

**Super G3 36.6 Kbps Modem and JBIG Compression** – combine to speed hard copy faxes to their destinations in just under two seconds per page.

**Dual Access** – perform multiple tasks at any given time. Scan outgoing fax documents into memory while the Savin 3515F or 3515MF prints an incoming fax document.

**Batch Transmission, Serial Broadcasting and Send Later** – combine to automate virtually all aspects of the traditional fax process.

### Connect Now!

With the Savin 3515MF, it's easy to make the right connections. Use the standard 10/100BaseT Ethernet interface and connect your Savin 3515MF to your LAN or, use the standard USB 2.0



*Advanced connectivity includes standard USB and Ethernet, plus optional Wireless, Bluetooth, IEEE 1284 and IEEE 1394.*

interface and connect your Savin 3515MF to your PC, it's your call.

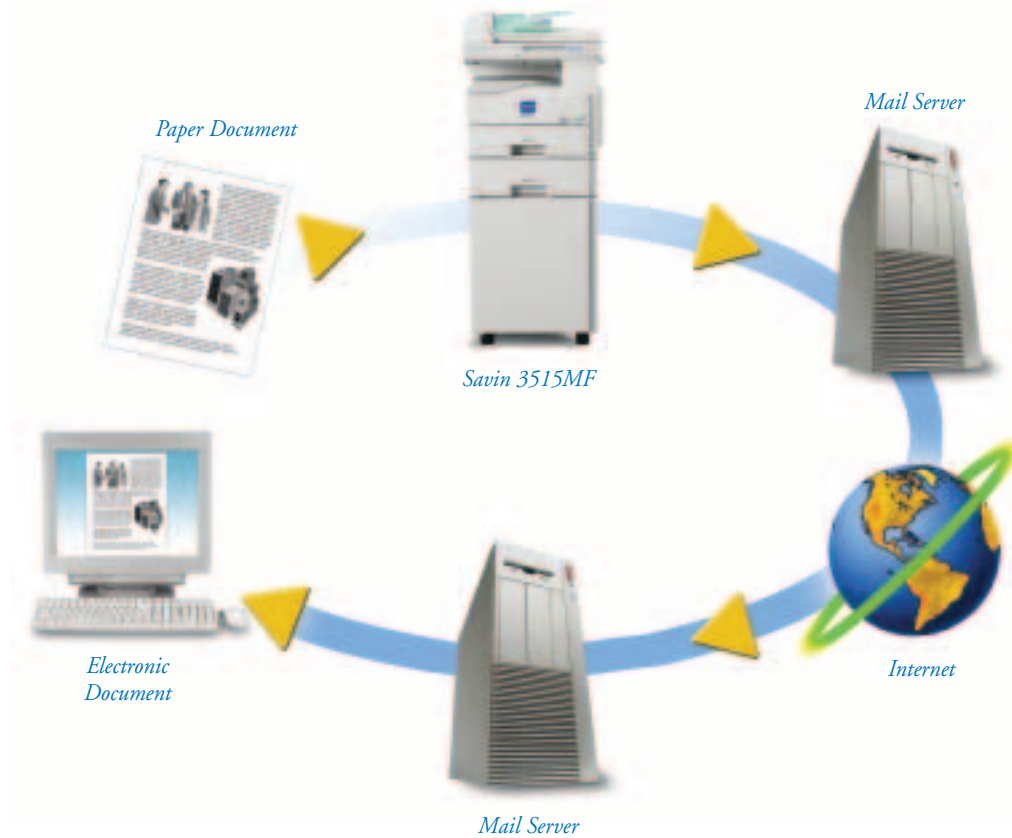
If you have specialized connectivity requirements, several options are available for your use: Wireless LAN and Bluetooth™ connections enable flexible placement options and eliminate additional cables.

Or, the IEEE 1284 Parallel and IEEE 1394 interfaces allow you to connect your Savin 3515MF to PCs that are not on the network.

\*Available on the Savin 3515MF only.

## Embedded Scan To E-Mail

Scan or fax hardcopy documents to multiple e-mail addresses in TIFF or PDF format for instant communication.

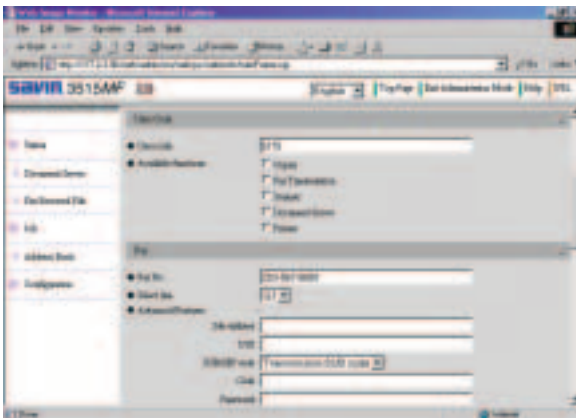


### Versatile Network Scanning

Implement an efficient and cost-effective electronic document delivery strategy using the Savin 3515MF's network scanning function.

**Embedded Scan to E-mail** – enables you to scan, or fax, hardcopy documents

to multiple e-mail addresses in TIFF or PDF format at a fraction of the cost of traditional overnight delivery services. Recipients receive important business communications virtually instantaneously, and there's no need to print, or copy, multiple document sets.



Easily enter fax addresses through Web Image Monitor.

**ScanRouter V2 Lite** – allows you to easily share hardcopy documents such as spreadsheets or hand-drawings. Or, for more rigorous scanning requirements, upgrade to ScanRouter V2 Professional and gain Scan to Folder/File and OCR capabilities.

**Network TWAIN Scanning** – enables users to scan hardcopy originals to an image editing application on their PC, which eliminates the need for individual desktop scanners.



Scan documents and store them on your PC for use in e-mails and applications.



Dual Component Consumable Design – simplifies routine maintenance while reducing cost-per-page.



30-sheet Automatic Document Feeder increases productivity by eliminating the need to manually place each original on the platen and allows for 8.5" x 14" copying.

# Savin 3515/3515F/ 3515MF



## Savin 3515/3515F/3515MF

**Choose The Savin 3515, 3515F or 3515MF That Meets The Needs Of Your Small Office/ Workgroup**



**3515**  
Digital Copier



**3515F**  
Digital Copier and Fax



**3515MF**  
Digital Copier, Fax,  
Scanner and Printer

<b>Copy/Print Speed</b>	<b>15 PPM</b>	<b>15 PPM</b>	<b>15 PPM</b>
<b>Automatic Document Feeder</b>	<b>Standard/30 Sheets</b>	<b>Standard/30 Sheets</b>	<b>Standard/30 Sheets</b>
<b>Standard Paper Capacity</b>	<b>350 Sheets</b>	<b>350 Sheets</b>	<b>350 Sheets</b>
<b>Maximum Paper Capacity</b>	<b>850 Sheets</b>	<b>850 Sheets</b>	<b>850 Sheets</b>
<b>Automatic Duplexing (1:2)</b>	<b>Standard</b>	<b>Standard</b>	<b>Standard</b>
<b>Network Printing/Scanning</b>	<b>Optional</b>	<b>Not Available</b>	<b>Standard</b>
<b>Scan To E-Mail</b>	<b>Optional</b>	<b>Not Available</b>	<b>Standard</b>
<b>Faxing</b>	<b>Not Available</b>	<b>Standard</b>	<b>Standard</b>
<b>Internet Faxing (T.37)</b>	<b>Not Available</b>	<b>Not Available</b>	<b>Standard</b>
<b>LAN-Faxing</b>	<b>Not Available</b>	<b>Not Available</b>	<b>Standard</b>

### Easy on the Budget

For the small business owner or manager, the ability to make smart fiscal decisions can mean the difference between success and failure. The Savin 3515, 3515F and 3515MF incorporate technology designed to dramatically reduce overall cost of ownership.

**Multifunctional Platform** – eliminates the need to acquire and manage up to four separate systems – including their supplies and maintenance agreements.

**Produce Print and Fax Pages at Copier Page Cost** – enables owners and managers to regulate and maintain consistent document production expenses.

### Good for the Environment

Sophisticated technology does not have to come at the expense of responsible environmental manufacturing policies. And to prove it, the Savin 3515, 3515F and 3515MF feature a variety of technologies designed to reduce energy consumption and promote the use of energy-saving capabilities.

**Standard Auto Duplexing** – enables two-sided copying\* and printing, which reduces paper consumption.

**Exceptionally Quiet Operation** – enables placement of the Savin 3515, 3515F or 3515MF where it will be the most productive – next to the people who use it.

**Quick Start Up Technology** – facilitates a fast Recovery Time – when coming out of the Energy Saver Mode – of just 10 seconds.

\*1-sided to 2-sided only.

### The Perfect Connected Solution For The Small Office Or Workgroup

When you choose a Savin system, you choose a system backed by a business partner that is committed to providing your small business with sophisticated, yet affordable, document management solutions.

**For more information contact your authorized Savin dealer.**



# Savin 3515/3515F/3515MF

## ENGINE/COPIER SPECIFICATIONS

<b>Configuration</b>	Console
<b>Scanning Element</b>	Flatbed with CCD array image-sensor
<b>Printing Process</b>	Laser beam scanning/marketing & electro-photographic printing
<b>Toner</b>	Dry, Dual Component
<b>System Memory (std./max)</b>	Savin 3515 16MB; Savin 3515F 64MB; Savin 3515MF 192MB
<b>Copy Resolution</b>	600 x 600 dpi
<b>Grayscale</b>	256 levels
<b>Exposure Adjustment</b>	Manual & Automatic
<b>Quantity Indicator</b>	1 - 99
<b>Original Type</b>	Sheet/Book
<b>Maximum Original Size</b>	8.5" x 14" through Automatic Document Feeder
<b>Copy Size</b>	5.5" x 8.5" to 8.5" x 14" through Bypass Tray and Optional Paper Bank
<b>Copy Type</b>	Plain Paper
	Envelopes, Transparencies (through Bypass Tray)
<b>Warm-up Time</b>	Savin 3515 - 15 seconds
	Savin 3515F & 3515MF - 30 seconds
<b>First Copy Speed</b>	Less than 7.5 seconds
<b>Continuous Copying Speed</b>	15 cpm - simplex
	9 cpm - duplex
<b>Duplex</b>	Yes (1:2)
<b>Recovery Time</b>	10 seconds (from Energy Saver Mode)
<b>Energy Saver Mode</b>	1W (Savin 3515)
	10W (Savin 3515F/Savin 3515MF)
<b>Power Source</b>	120V/60HZ
<b>Dimensions (WxDxH)</b>	18.43" x 17.72" x 20.12" (with Automatic Document Feeder)
<b>Weight</b>	Savin 3515 with ADF - 52.91 lbs.
	Savin 3515F - 55.12 lbs.
	Savin 3515MF - 55.12 lbs.
<b>Standard Paper Capacity</b>	250 sheets x 1 tray and 100-sheet multi bypass tray
<b>Optional Paper Capacity</b>	500 sheets x 1 tray
<b>Paper Size</b>	5.5" x 8.5" to 8.5" x 11" - standard tray
	5.5" x 8.5" to 8.5" x 14" - bypass tray
<b>Paper Weight</b>	16 - 24 lb. Bond - Tray 1 and Duplex
	16 - 42 lb. Bond - Bypass Tray
<b>Reduction Ratios</b>	65%, 78%, 93%
<b>Enlargement Ratios</b>	129%, 155%
<b>Zoom</b>	50% to 200% in 1% increments
<b>Standard Features</b>	Auto Start, Combine Copy, Duplex Copying, Duplex Printing, Electronic Sort, Photo Mode
<b>Optional Features with 500 x 1 Paper Bank</b>	Auto Tray Switching

## PRINTER SPECIFICATIONS

<b>Print Speed</b>	15 ppm
<b>CPU</b>	TMPR495B-300 240MHZ
<b>Standard Interfaces</b>	10/100 Base TX
	USB 2.0
<b>Optional Interfaces</b>	IEEE 802.11b Wireless LAN
	Bluetooth
	IEEE 1394
	IEEE 1284
<b>Memory Capacity</b>	64MB Resident, plus 128MB pre-installed in Savin 3515MF
<b>Network Protocol</b>	TCP/IP, IPX/SX, SMB, AppleTalk
<b>Utilities</b>	SmartDevice Monitor, Web SmartDevice Monitor, Web Image Monitor - available with Savin 3515MF only
<b>Page Description Languages</b>	PCL5e/6, RPCS
	PostScript3 (optional)
<b>Print Resolution</b>	PCL5e: 300 dpi, 600 dpi
	PCL6: 600 dpi
	RPCS: 300 dpi, 600 dpi
	PS3: 600 dpi
<b>Grayscale</b>	256 levels
<b>Fonts for PCL5e/6</b>	35 Intellifonts, 10 TrueType Fonts, 1 Bitmap
<b>Fonts for PS3</b>	136 PostScript Fonts
<b>Drivers for PCL5e/6, RPCS</b>	Windows 9x/Me, NT4.0, 2000, XP, 2003
<b>Drivers for PS3</b>	Windows 9x/Me, NT4.0, 2000, XP, 2003, Macintosh 8.6 - 9.2X (OS X Classic)

## SCANNER SPECIFICATIONS

<b>Scanning Speed</b>	Embedded Scan to E-mail: 22 ipm (@200 dpi) ScanRouter: 22 ipm (@200 dpi) TWAIN: 18 ipm (@200 dpi)
<b>Scanning Resolution</b>	600 dpi
<b>Scan Area</b>	8.5" x 11" - platen 8.5" x 14" - ADF
<b>Interface</b>	10/100 Base TX IEEE 802.11b Wireless LAN IEEE 1394
<b>Protocol</b>	SMTP, TCP/IP
<b>Memory Capacity</b>	64MB Resident, plus 128MB pre-installed in Savin 3515MF (shared with printer)
<b>File Format</b>	Single Page TIFF, Multi-Page TIFF, PDF

## FAX SPECIFICATIONS

<b>Circuit</b>	PSTN, PBX
<b>Compatibility</b>	ITU-T (CCITT) G3
<b>Resolution</b>	200 x 100 dpi 200 x 200 dpi 200 x 400 dpi
<b>Compression Method</b>	MH, MR, MMR, JBIG
<b>Scanning Speed</b>	Less than 2 seconds
<b>Modem Speed</b>	33.6 Kbps with Auto Fallback
<b>Transmission Speed</b>	G3: 3.0 seconds per page (without JBIG) G3: 2.0 seconds per page (with JBIG)
<b>Memory</b>	2 MB; 160 pages*
<b>Memory Backup</b>	One Hour
<b>Quick Dials</b>	16 (out of 150 Speed Dials)
<b>Speed Dials</b>	150
<b>Group Dials</b>	10 (maximum 100 numbers per group)
<b>ID Code Programming</b>	4 digits
<b>User Function Key</b>	3 keys
<b>User Codes</b>	8 digits (50 personal codes)
<b>Standard Features</b>	Batch Transmission, Dual Access, One Hour Backup, Serial Broadcasting

\*Note: Based on ITU-T Test Chart No. 1 in standard mode.

## OPTIONS

<b>PS480 (500 sheets x 1) Paper Bank</b>	
<b>Paper Size</b>	8.5" x 11" SEF, 8.5" x 14" SEF
<b>Paper Weight</b>	16 - 24 lb. Bond
<b>Paper Capacity</b>	1 x 500 sheets

<b>Scanner/Printer Kit</b>	
<b>Bundled Software Includes</b>	ScanRouter V2 Lite DeskTopBinder V2 Lite

### PostScript3

### IEEE 1284 Interface Type A

### IEEE 1394 Interface Board Type B

<b>Included Cables</b>	2.0 m 6 pin to 4 pin cable
	2.0 m 6 pin to 6 pin cable

<b>Hardware Specifications</b>	6 pins; 2 ports available
<b>Data Transmission Speeds</b>	400/200/100 Mbps
<b>System Requirements for IP over 1394</b>	MS-Windows 2000, XP

### IEEE 802.11b Wireless LAN Interface Type D

<b>Data Transmission Speeds</b>	1/2/5.5/11 Mbps
<b>Protocol</b>	TCP/IP
<b>Connection Types</b>	Ad hoc mode Infrastructure mode
<b>Distance Between Devices</b>	151 to 1,300 feet (140 to 400 meters)

### Bluetooth Interface Type 2238

<b>Data Transmission Speeds</b>	1 Mbps
<b>Supported OS</b>	Windows XP, 2000, 98 SE, Me (dependent on Bluetooth Card)
<b>Distance Between Devices</b>	33 feet (10 meters)

# Savin

Savin Corporation Stamford, Connecticut 06904 ©2004 Savin Corporation.

SAVIN® is a registered trademark of Savin Corporation. Windows® and Windows® 3.1/95/98/Me/NT4.0/2000/XP are registered trademarks of Microsoft Corporation. Macintosh®, Mac® OS and AppleTalk® are registered trademarks of Apple Computer, Inc. Adobe® and PostScript® are trademarks of Adobe Systems, Inc. PCL® is a registered trademark of Hewlett-Packard Company. RPCS™ is a trademark of Ricoh Company, Ltd. All other trademarks are the property of their respective owners. Product specifications subject to change without notice.

Printed in U.S.A. on recycled paper. (S1963) 75M 5/04

